

How to set networked printer by LPR (Line Printer Remote)/LPD (Line Printer Daemon) in MAC OS?

Take the following setting environment as an example:

Printer : HP deskjet 3000

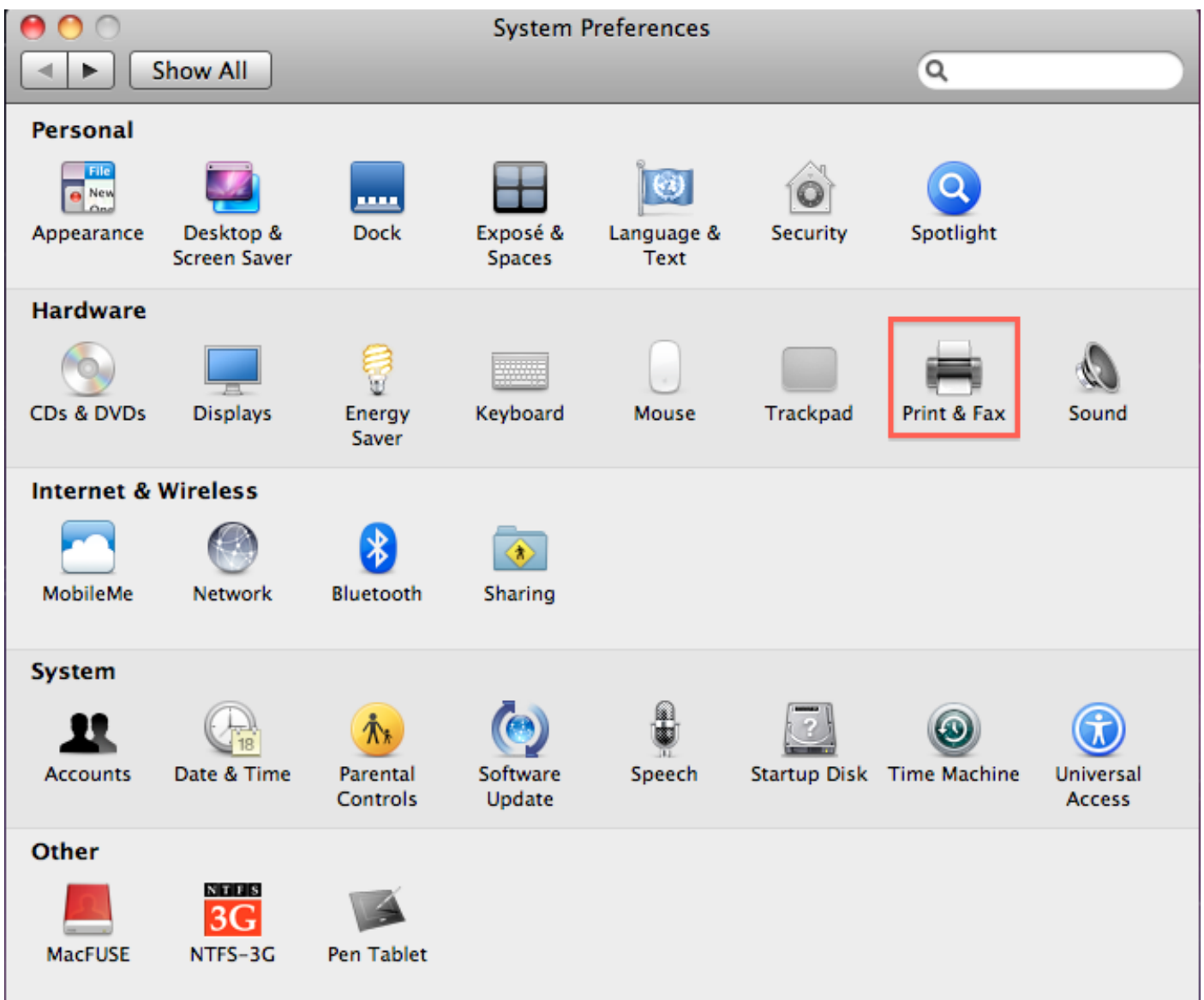
PC's OS : MAC 10.6.8

Router : RT-N66U

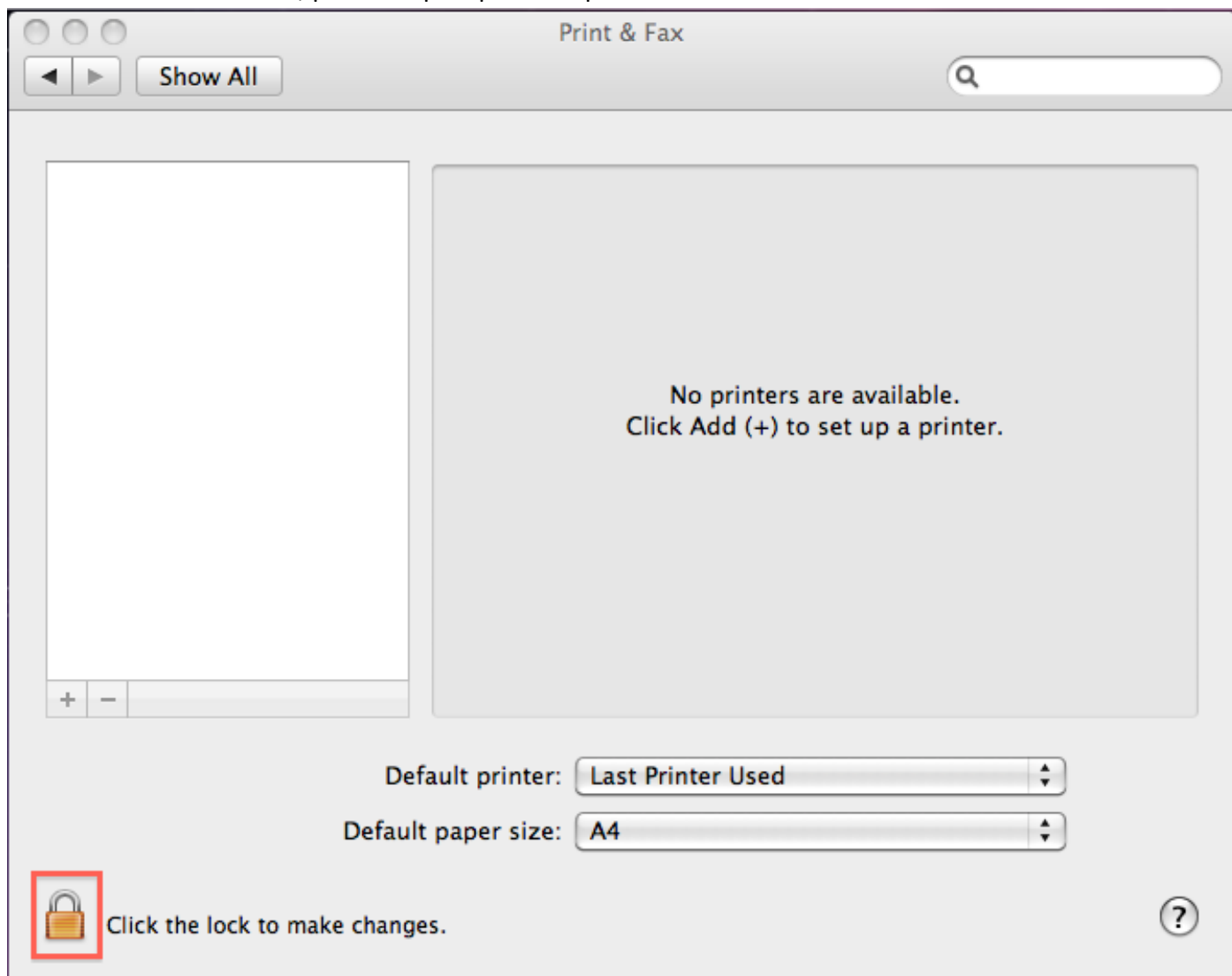
1. Please click "System Preferences" at the bottom of desktop.



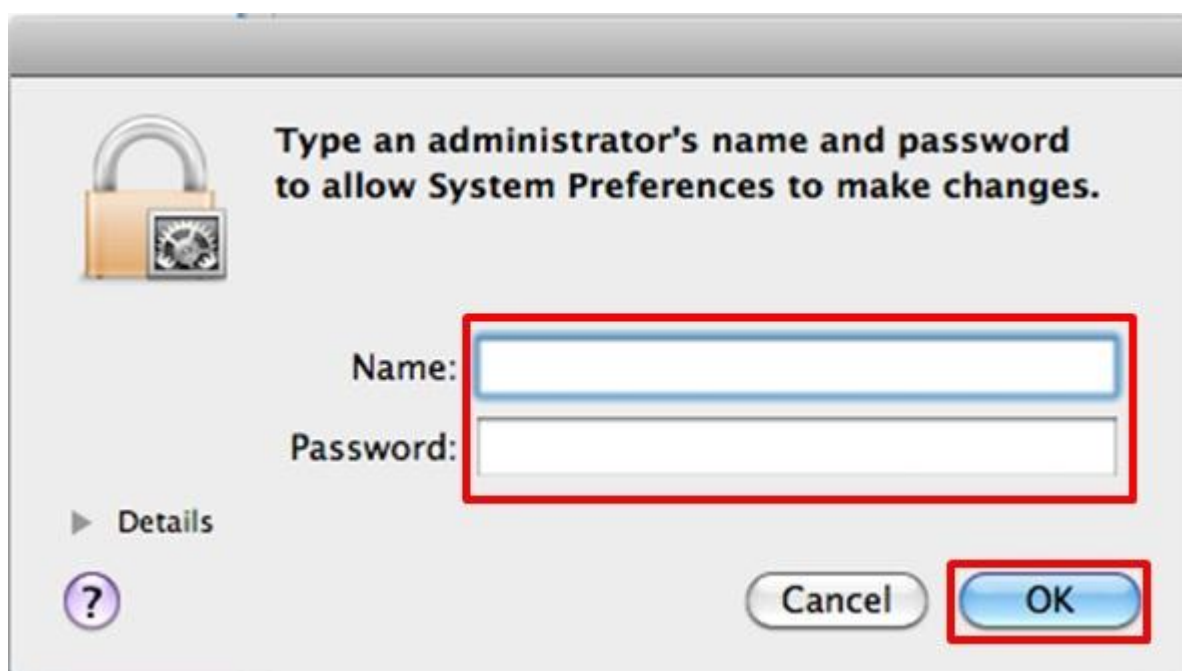
2. Click application—"Print & Fax".



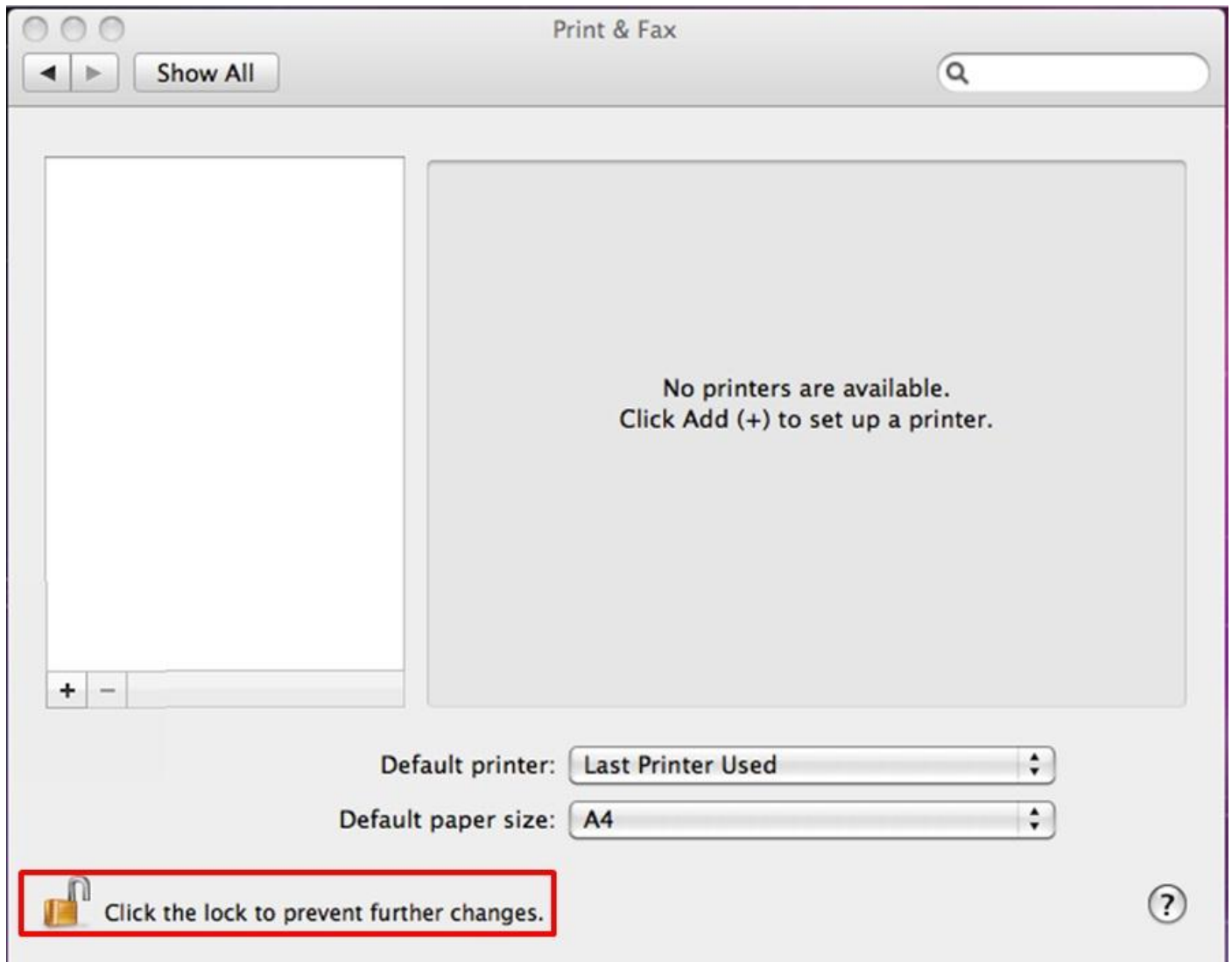
3. Please click icon—“lock” to unlock permission at the bottom-left of window.
If the icon is unlocked, please skip step 3 to step 5.



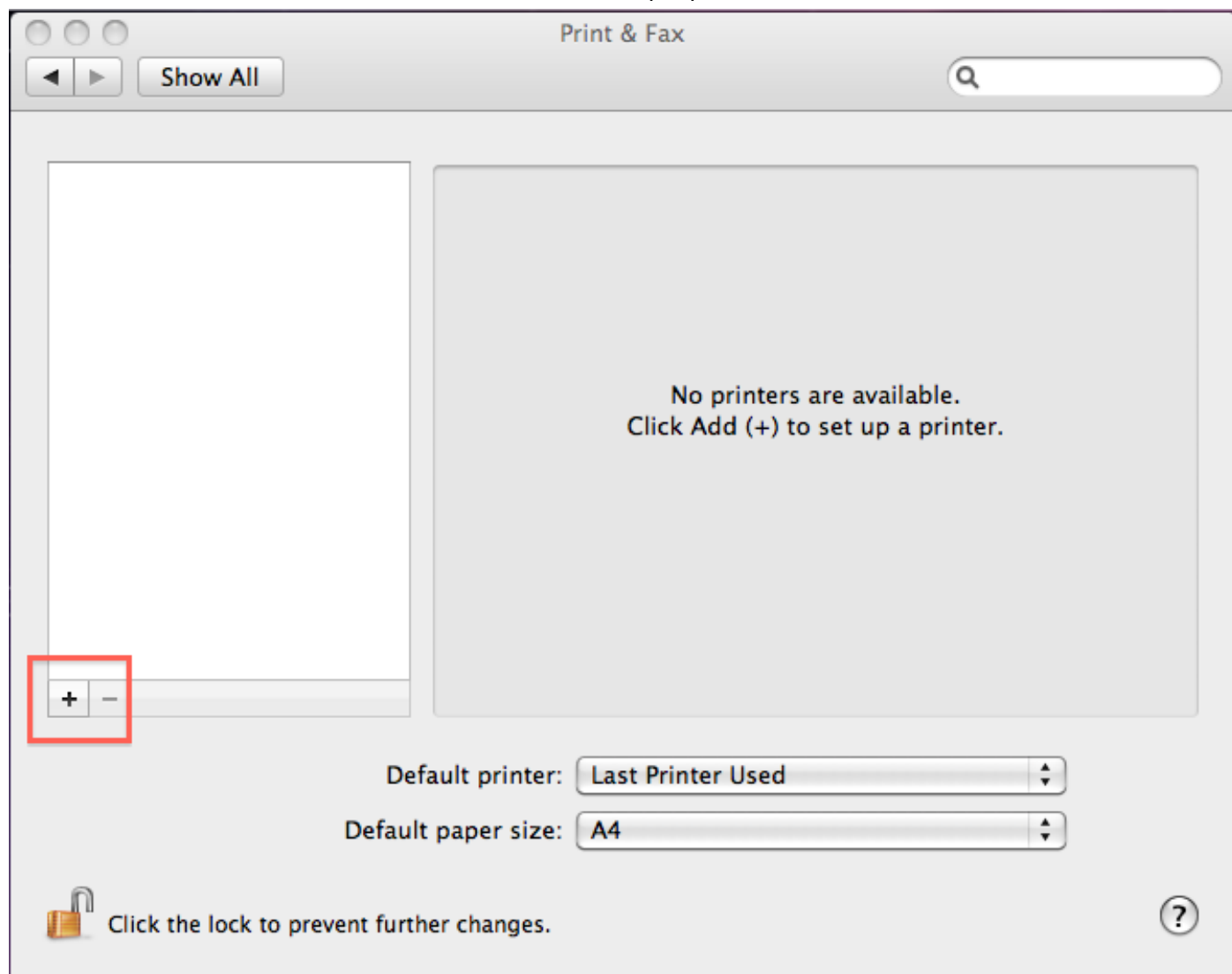
4. Please type administrator's name and password in fields of "Name" and "Password", and then, click button—"OK".



5. Please confirm the icon is unlocked as following.

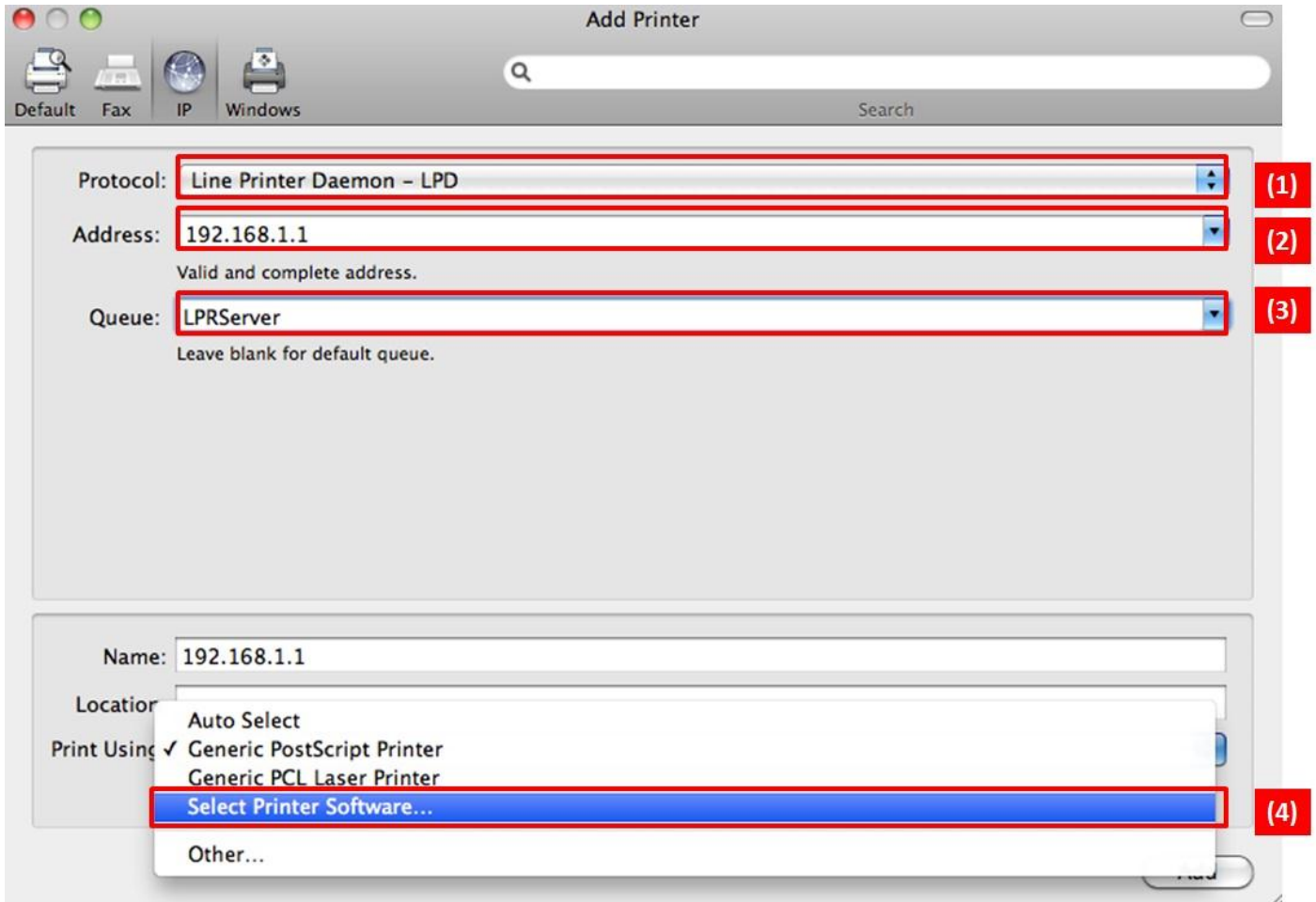


6. Click icon—“+” at the middle-left of window to set up a printer.

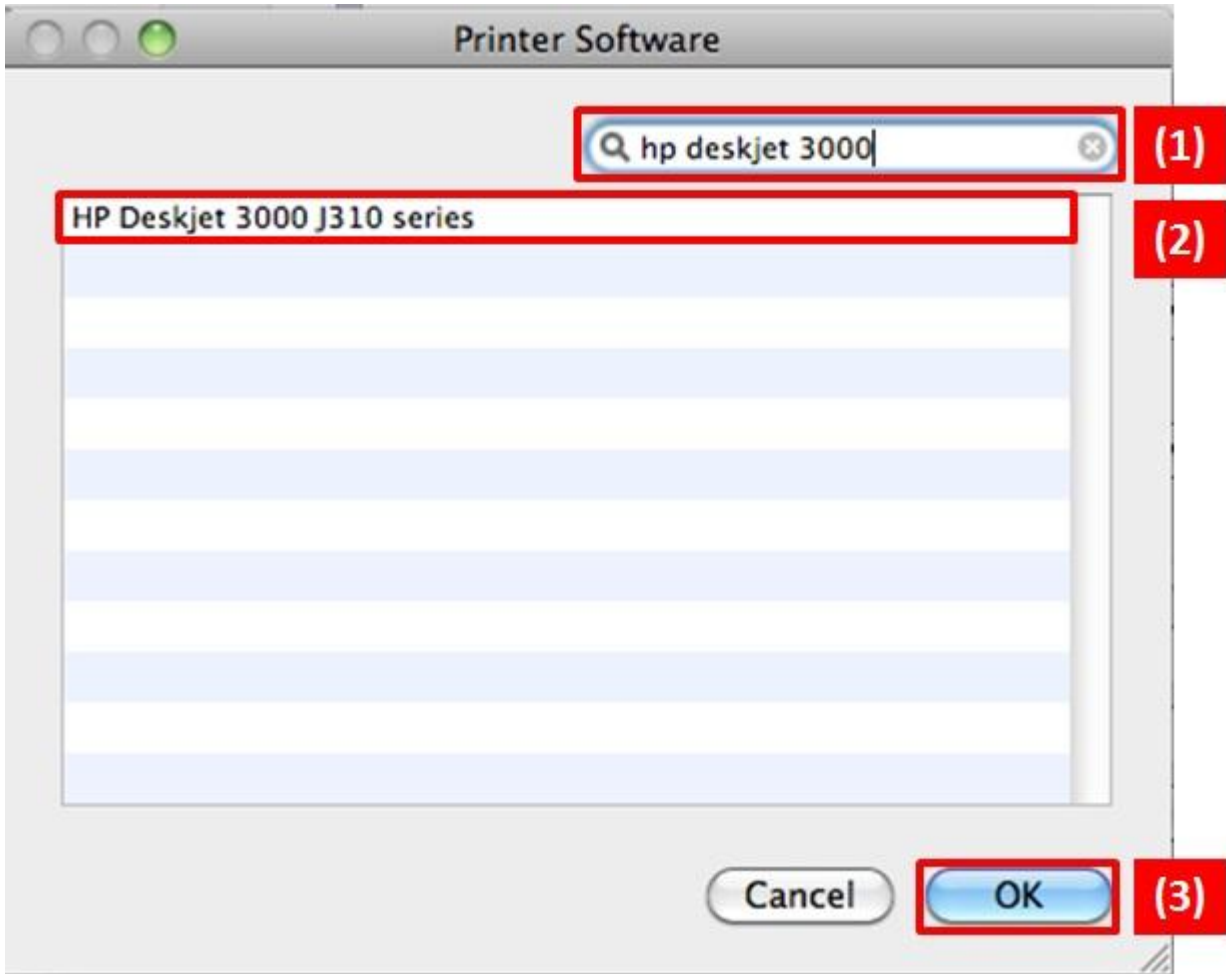


7. The information of setting a printer as following.

- (1) Select “Line Printer Daemon – LPD” in item—“Protocol”.
- (2) Type the IP address of ASUS router. The default IP address of ASUS router is 192.168.1.1.
Please depend on the LAN IP address of router which you set.
- (3) Please type “LPRServer” in the field of item—“Queue”.
- (4) Please select “Select Printer Software...” in item—“Print Using”.



8. Install the driver of printer from MAC OS pre-installed or Internet.
- (1) Please type model name of printer in search fields.
 - (2) There will be displayed suited driver in list; please click a suited driver for installing driver.
 - (3) Click button—"OK".



9. There will be displayed driver in item—“Print Using” and click button—“Add”.

Add Printer

Default Fax IP Windows Search

Protocol: Line Printer Daemon - LPD

Address: 192.168.1.1
Valid and complete address.

Queue: LPRServer
Leave blank for default queue.

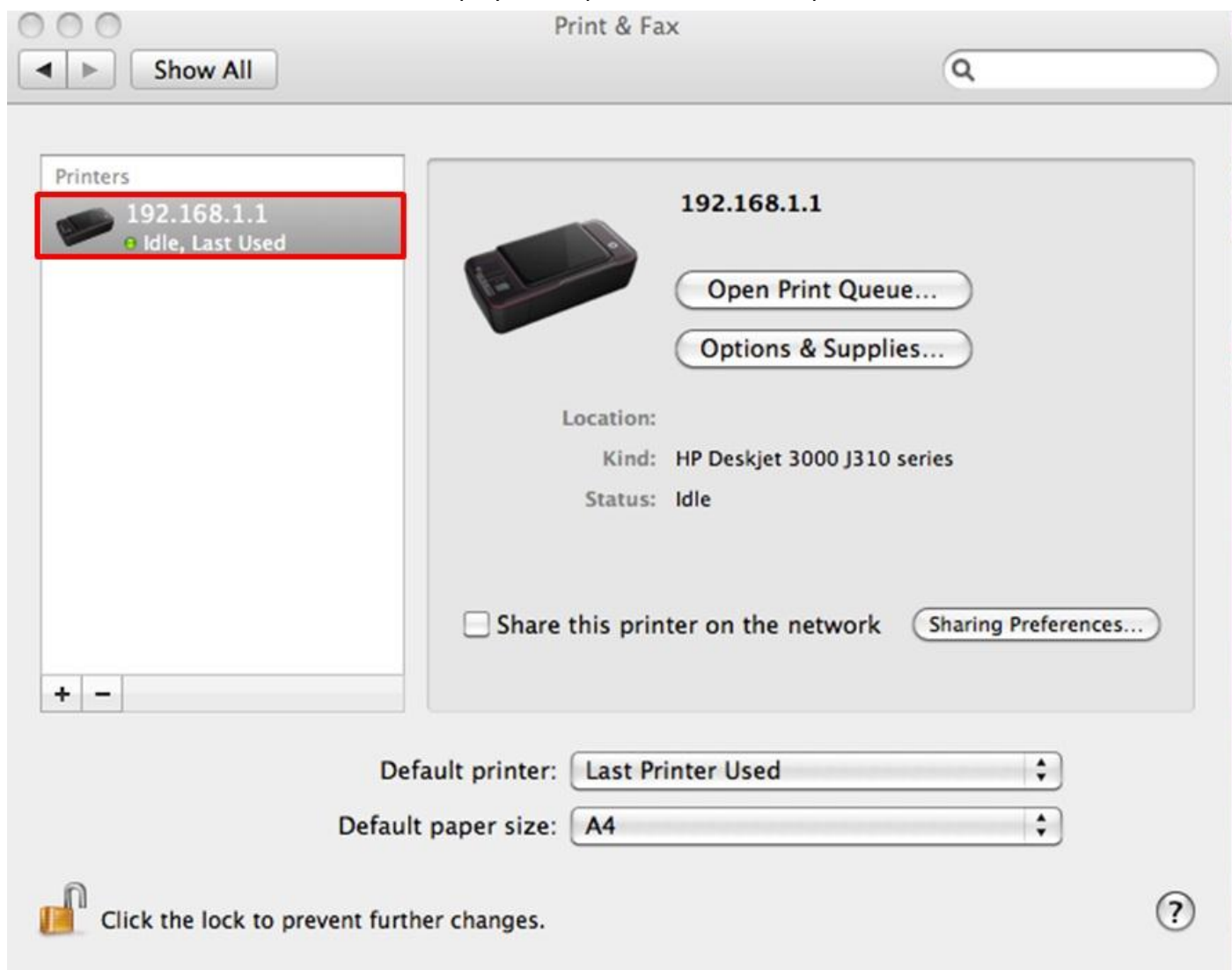
Name: 192.168.1.1

Location:

Print Using: HP Deskjet 3000 J310 series

Add

10. Please confirm that there will be displayed the printer in the list of printers.



※ If you want to print a file, please select “192.168.1.1” which is printer name in item—“Printer”.

The image shows a printer control interface. On the left is a document preview titled "Seant, Chou Last Name" with a small portrait photo at the top. Below the preview are navigation buttons (back, forward) and a page indicator "1 of 1". On the right is a settings panel with the following options:

- Printer:** 192.168.1.1 (highlighted with a red box)
- Presets:** Standard
- Copies:** 1, Collated
- Pages:** All, From: 1 to: 1
- Layout:** (dropdown menu)
- Pages per Sheet:** 1
- Layout Direction:** Four icons for different orientations: Z (top-left to bottom-right), S (top-right to bottom-left), W (top-left to top-right), and N (top-right to top-left).
- Border:** None
- Two-Sided:** Off
- Reverse page orientation
- Flip horizontally

At the bottom of the interface are buttons for "?", "PDF", "Cancel", and "Print".