

Notebook PC

Driver/Utility Setup and Reference

Product Name:	Notebook PC Support CD
Manual Revision:	1.00 E962
Release Date:	Mar 2002

Table of Contents

Support CD for Windows	4
Autorun Screens for Windows XP	4
Drivers for Windows	4
Intel INF Update	7
ATKACPI Driver	8
VGA Driver	9
Audio Driver	11
LAN Driver	12
Modem Driver	13
TouchPad	14
TouchPad	14
Fast IR Driver	16
Hotkey Utility (Under ATKACPI Utility)	19
Windows Flash Utility (Under ATKACPI Utility)	20
ASUS PC Probe (Under ATKACPI Utility)	21
Check Mail Utility (Under ATKACPI Utility)	22
Windows Software Reference	23

Support CD for Windows

The Notebook PC you purchased may or may not be preloaded with an operating system. The support CD included with this Notebook PC provides all the necessary drivers and utilities in order for you to use your Notebook PC with Microsoft® Windows® 98/ME/2K/XP (referred to as “Windows” in this User’s Manual).

The levels of hardware and software support may vary depending on the installed operating system. Operating systems not pre-installed on this Notebook PC may produce different results than the ones described in the provided user’s manuals.

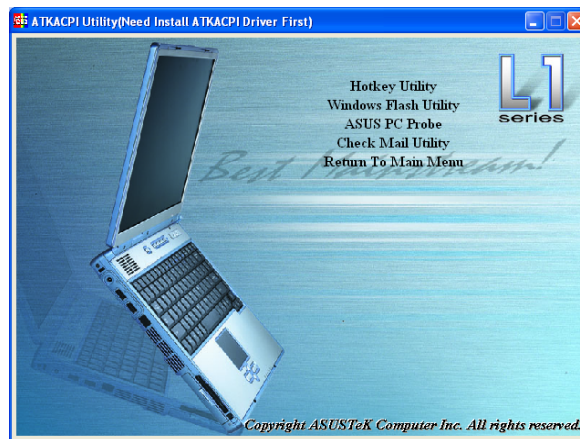
If your Notebook PC is not preloaded with any operating system, or you want to install another operating system other than the preloaded one, the following pages will give step-by-step installation procedures for typical system configurations under the Windows® operating system. For application usage, please see the online help provided with each of the applications after installation. The following is what you will see when you insert the support CD. If the autorun menu does not appear, double clicking the CD-ROM disc drive icon in “My Computer” (may be the (D:) drive or (E:) drive on hard drives with two partitions) or running SETUP.EXE (through Start menu “Run...”) located in the root of the support CD, will bring up the autorun menu.

Autorun Screens for Windows XP

Main Menu



Sub-Menu



Drivers for Windows

The following are descriptions of each autorun menu item. Due to ongoing improvements in the support CD, there may be some differences between this User’s Manual and your support CD. The names in quotations are the actual driver names displayed in the System Properties of MS Windows. Windows cannot contain all the device drivers from every manufacturer, with every update; therefore the provided support CD will contain the best driver for your built-in devices and should be used in place of any Windows default drivers.

Intel 830M INF Update (required) “Intel 828XX” Drivers

Shown under Windows “**System devices.**” This installs drivers for the Notebook PC’s specific chipset.

ATKACPI Driver (required) “ATK0100 ACPI UTILITY” Driver

Shown under Windows “**System devices.**” This installs drivers for the Notebook PC’s Advanced Configuration and Power Interface (ACPI) for features utilizing power management functions.

VGA Driver (required) “Intel 830M Graphics Controller - 0 / 1” Driver

Shown under Windows “**Display adapters.**” This installs display drivers for your operating system in order to properly use the Notebook PC’s built-in graphics controller and to provide optimal features. Once the display driver is installed, you can change your display’s resolution and color through Display Properties.

Audio Driver (required) “Intel AC’97 Audio Controller - SigmaTel Codec” Driver

Shown under Windows “**Sound, video and game controllers.**” This installs audio drivers for your operating system in order to properly use the Notebook PC’s built-in sound controller. All audio functions are configured through Windows and help can be located within Windows documentation or Windows help files.

LAN Driver (required) “Realtek RTL8139/810X Family PCI Fast Ethernet NIC” Driver

Located under Windows “**Network Adapters.**” Installs the required LAN driver for the Notebook PC’s built-in PCI Fast-Ethernet controller. Fast-Ethernet supports both 10 Base-T or 100 Base-TX networks at half or full duplex.

Modem Driver (required-WinME) “HSP56 MR” Driver

Installs the necessary driver in order for your operating system to have the correct files for the Notebook PC with built-in modem and drivers for integration with the internal audio. With third-party software, fax and speaker phone capabilities are possible using this Notebook PC.

TouchPad (recommended) “Synaptics PS/2 TouchPad” Driver

Shown under Windows “**Mice and other pointing devices.**” Installs “**Synaptics® TouchPad**” utility. The Notebook PC already supports built-in or externally connected keyboard and PS/2 mouse devices. However, the provided device driver will provide enhancements and features to the TouchPad to increase the functionality of the TouchPad. For detailed information, see the Software Reference in the next section. To access help, right-click the TouchPad icon on the taskbar and select Help.

Fast IR Driver (required) “IrDA Fast Infrared Port” Driver

Shown under “**Network adapters**”. Installs driver and configures your Infrared Transceiver A to “**HPHSDL-2300/3600**” so that your Infrared port can work properly.

PC-cillin 2000 (optional) Utility

Installs **Trend’s PC-cillin 2000**, a world-class anti-virus protection software for the new Internet era, to keep your PC virus-free. This very powerful anti-virus software is bundled with each Notebook PC to protect your investment. As software become more and more a part of our daily lives, measures have to be taken to protect them. You may skip this software if you have your own anti-virus software.

ATKACPI Utility (submenu) [Link](#)

Shows you a sub-menu with additional utilities. These utilities require that you first install the **ATKACPI** driver. See next page for descriptions of the utilities.

Read Me Text

Gives you notes concerning this support CD or the Notebook PC.

Browse this CD

Shows you the contents of this support CD using Windows Explorer.

Technical Support Form Text

Opens up a Technical Support Request Form so that you will understand what kind of information is needed if you run into problems and require technical assistance.

Exit

Closes the support CD autorun screen.

ATKACPI Utility (Submenu)

Hotkey Utility (required) [Utility](#)

Installs **Hotkey utility**. Hotkey utility is a program designed to intercept key strokes so that key assignments can be made to run a program or script. This program cannot be used to change default keys or key combinations used by other software, operating systems, or by the Notebook PC's hardware.

Windows Flash Utility (recommended) [Utility](#)

Installs a BIOS update utility for Windows so that you can conveniently update your Notebook PC's BIOS without having to restart your Notebook PC in DOS mode.

ASUS PC Probe (optional) [Utility](#)

Installs **PC Probe** utility to monitor the Notebook PC's CPU temperature and other resources. This is an optional software to help you better manage your Notebook PC's resources.

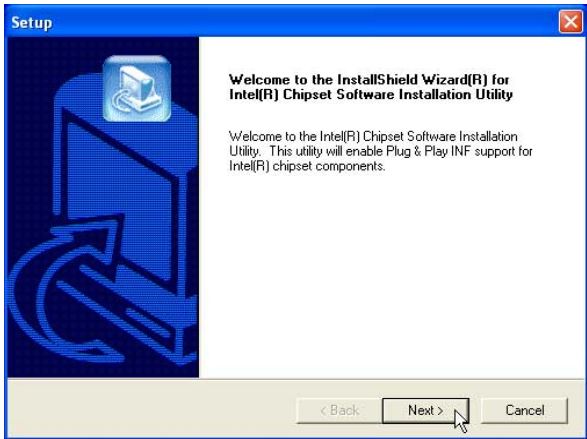
Check Mail Utility (optional) [Utility](#)

Installs Check Mail Utility to monitor and notify you of incoming email messages waiting in your Microsoft® Outlook or Outlook Express Inbox. (This utility may or may not be compatible with other email applications.)

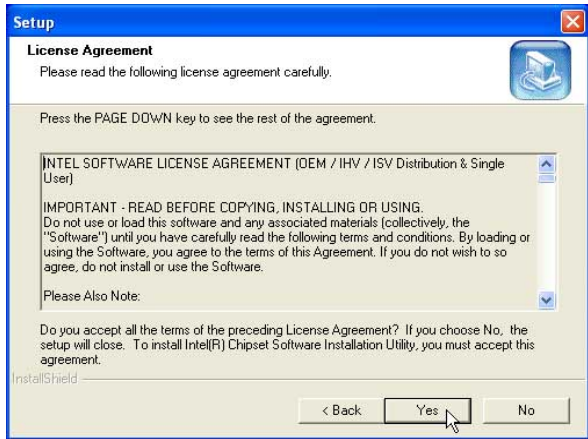
Intel INF Update

Installing the Intel INF Update

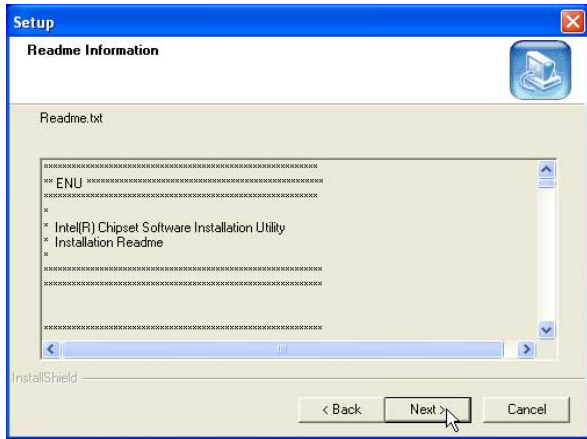
Insert the support CD and click Intel **INF Update** on the autorun menu to start the installation wizard.



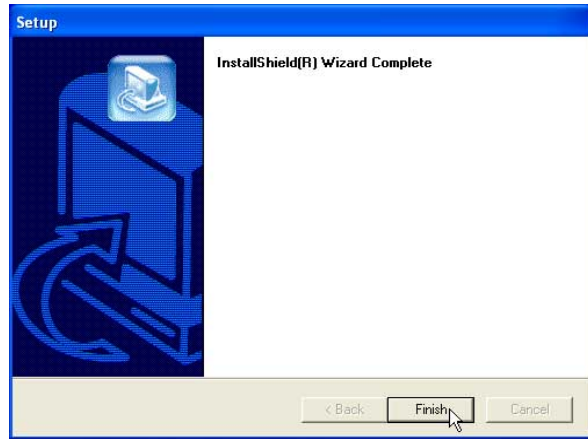
(1) Click **Next** after reading the welcome message.



(2) Click **Yes** after reading the License Agreement.



(3) Click **Next** after reading the Readme Information.

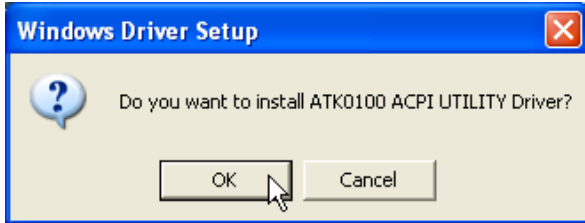


(4) Click **Finish** to exit the installation wizard.

ATKACPI Driver

Installing the ATKACPI Driver

Insert the support CD and click **ATKACPI Driver** on the autorun menu to start the installation wizard.



(1) Click **OK** to install the driver.

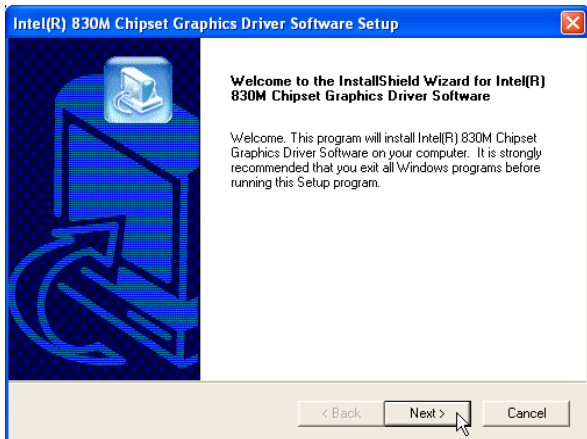


(2) Installation has finished. Select **OK** to restart your computer.

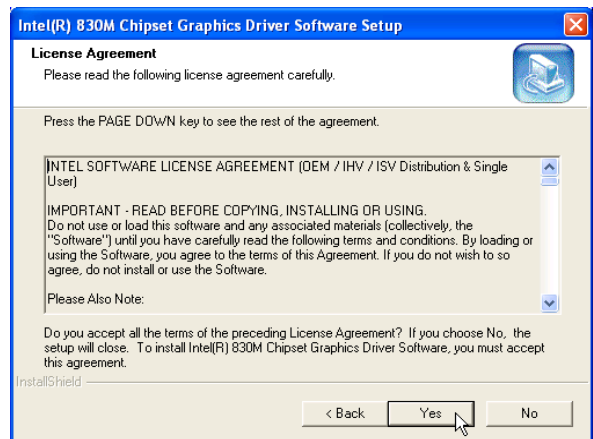
VGA Driver

Installing the VGA Driver

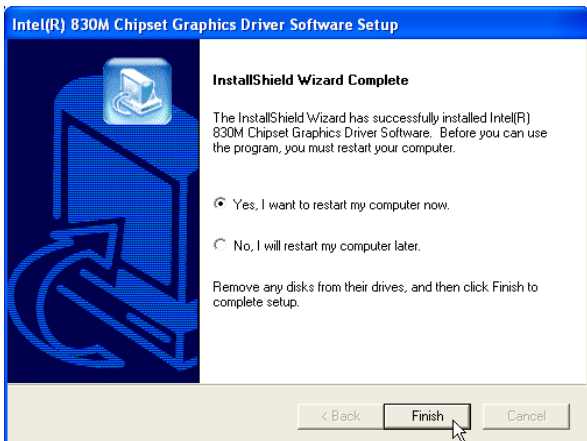
After installing Windows, your screen area will appear smaller than the available display and with poor resolution. Insert the support CD and click **VGA Driver** on the autorun menu to start the installation wizard.



(1) Click **Next** after reading the welcome message.



(2) Click **Yes** after reading the License Agreement.

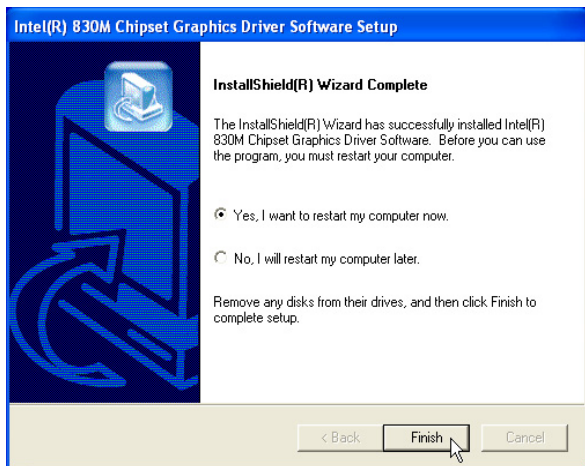


(3) Installation has finished. Select **Yes** and click **Finish** to restart your computer so that you can use a larger screen area to install other items

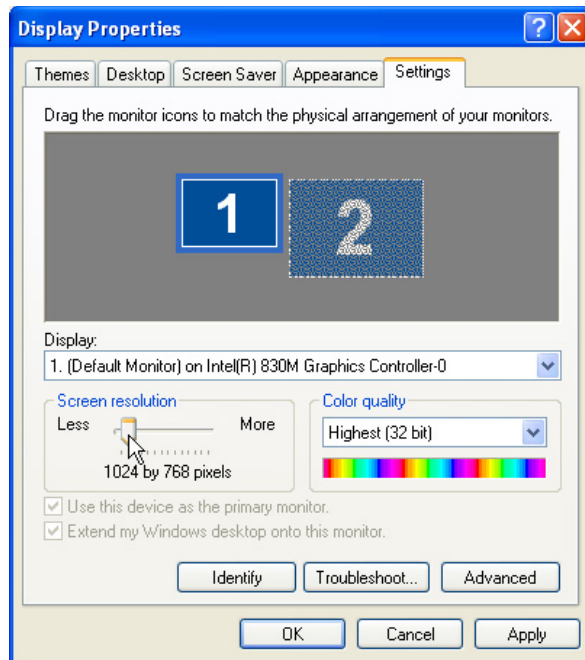
VGA Driver

Installing the VGA Driver (Cont.)

VGA Driver



(4) Setup has finished. Click **OK** to restart your computer.



(5) After restart, set the “Screen resolution” to **1024 by 768** pixels and “Color quality” to **Highest**. Select **OK** to exit with these settings.

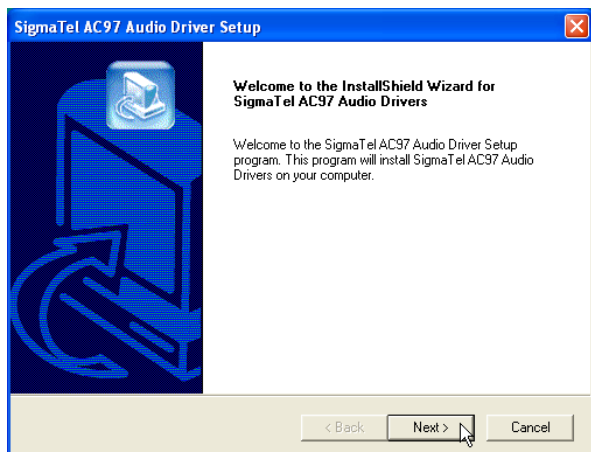


(6) Click **Yes** to keep the monitor settings. If you do not reply in time, your previous monitor settings will be restored.

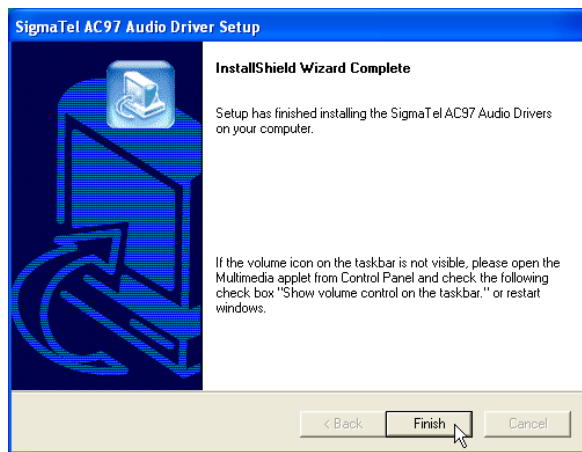
Audio Driver

Installing the Audio Driver

Insert the support CD and click **Audio Driver** on the autorun menu to start the installation wizard.



(1) Click **Next** to install the driver.

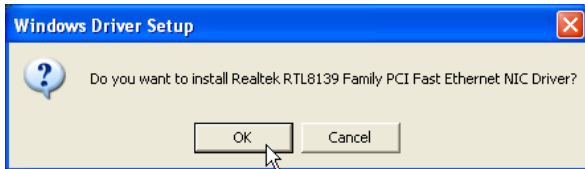


(2) Installation has finished. Click **Finish** to exit the setup wizard.

LAN Driver

Installing the LAN Driver

Insert the support CD and click **LAN Driver** on the autorun menu to start the installation wizard.



(1) Click **OK** to begin installing drivers.

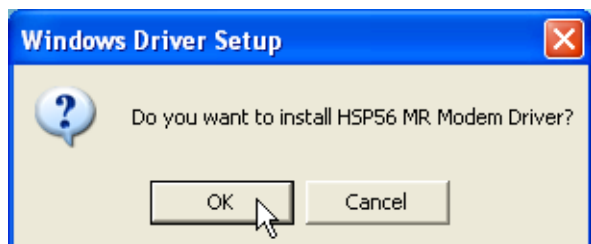


(2) Setup has finished. Click **OK** to restart your computer.

Modem Driver

Installing the Modem Driver

Insert the support CD and click **Modem Driver** on the autorun menu to start the installation wizard.



(1) Click **OK** to begin installing drivers.



(2) Setup has finished. Click **OK** to restart your computer.

TouchPad

Installing the TouchPad Driver

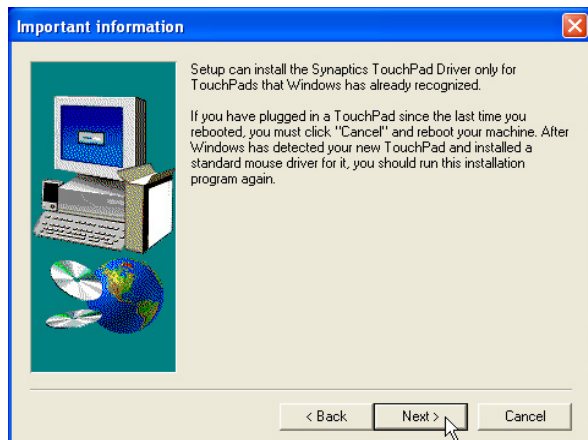
Insert the support CD and click **TouchPad** on the autorun menu to start the installation wizard.



(1) Choose a language and click **OK**.



(2) Click **Next** after reading the Welcome message.



(3) The TouchPad is integrated into this Notebook PC. Click **Next** to continue.



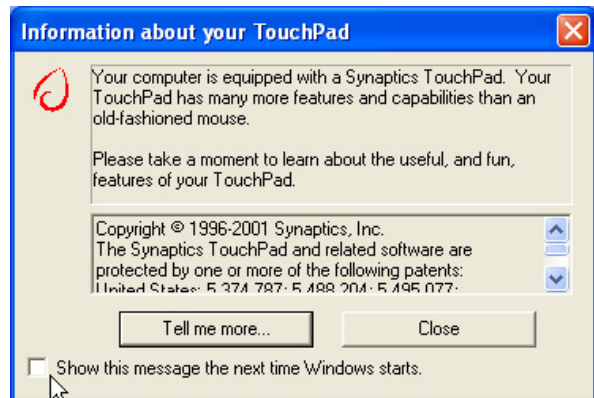
(4) Click **Next** after verifying the installation path.

TouchPad

Installing the TouchPad Driver (Cont.)



- (5) Installation has finished. Select **No** and click **Finish** so that you can install other items and restart later.

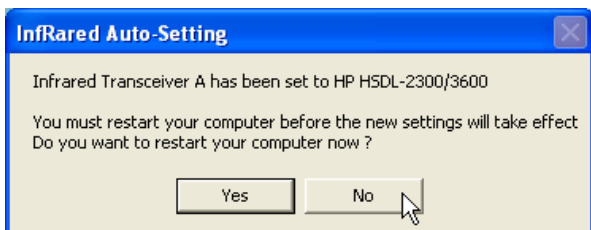


- (6) After you restart, you will see a “splash” screen that will give you easy access to “Synaptics TouchPad Help” by clicking on the “Tell me more...” button. Deselect the **Show...** to disable this from showing on every Windows startup.

Fast IR Driver

Setting the IR port

Insert the support CD and click **Fast IR Driver** on the autorun menu to make the setting as shown by the dialog box.

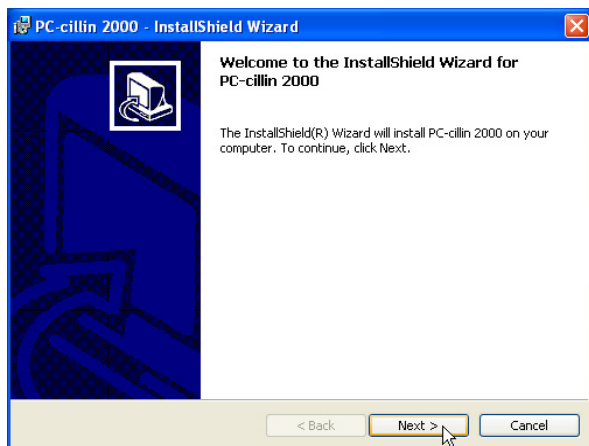


(1) Setting is complete. Click **No** so that you can install other drivers and retart your computer later.

PC-cillin 2000

Installing PC-cillin 2000

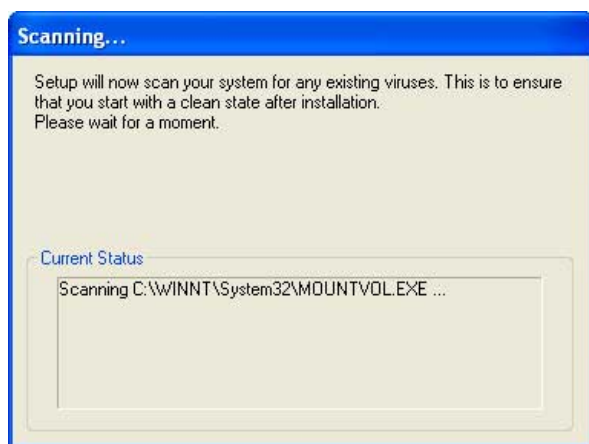
Insert the support CD and click **PC-cillin 2000** on the autorun menu to start the installation wizard.



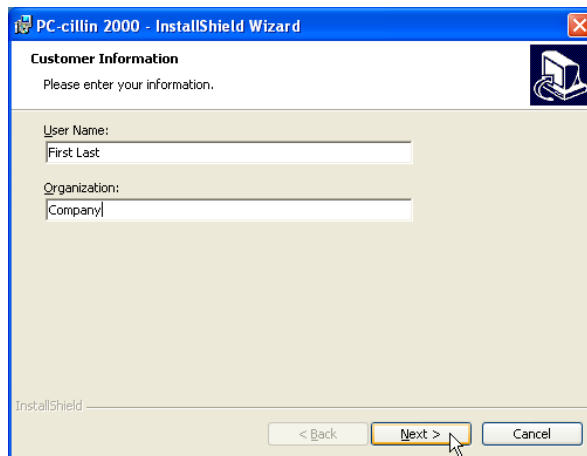
(1) Click **Next** after reading the welcome message.



(2) Click **Next** after reading the license agreement.



(3) Wait while setup checks your system for viruses based on the included pattern file. (This is usually older than what is available on the Internet at "<http://www.trend.com>". You should rescan your hard drives after updating the virus pattern.) This screen will change when completed.



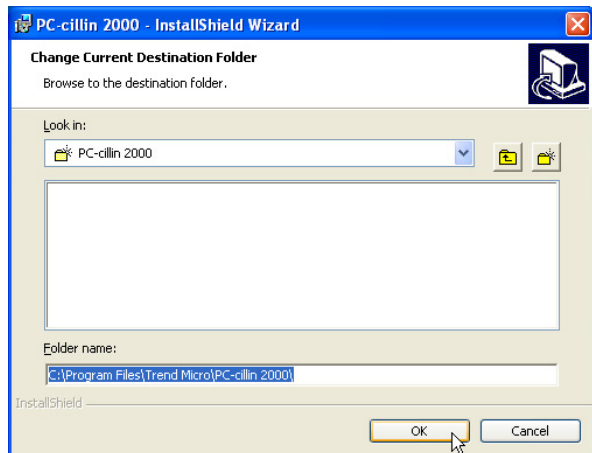
(4) Enter your "User Name" and "Organization" if applicable. Click **Next** to continue.

PC-cillin 2000

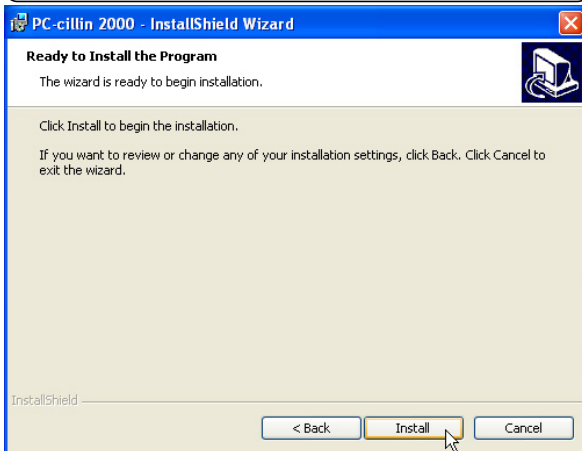
Installing the PC-cillin 2000 (Cont.)



(5) Change the destination folder or click **Next** to install to the specified directory.



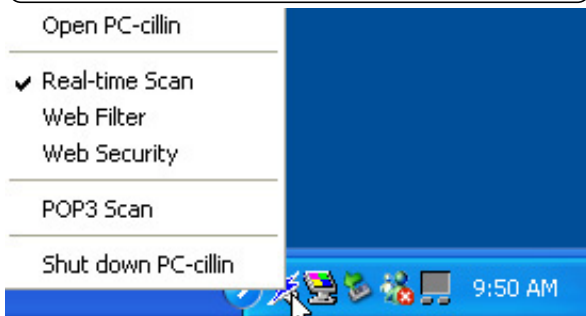
(*) If you click "Change...", enter a complete path, not just a folder name. Click **OK** when done.



(6) Click **Install** now or click Back to make changes to the installation settings.



(7) Installation has finished. Select **Finish** to exit the installation wizard. No restart is necessary.



* An icon will be placed in your taskbar to show protection status and allow quick access to the PC-cillin software settings. Right-click the icon for quick software settings.

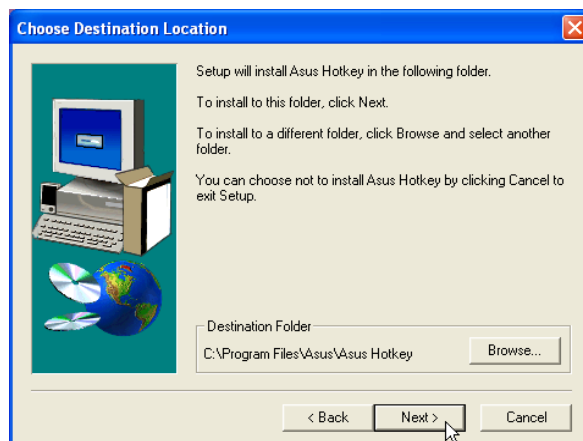
Hotkey Utility (Under ATKACPI Utility)

Installing the Hotkey Utility

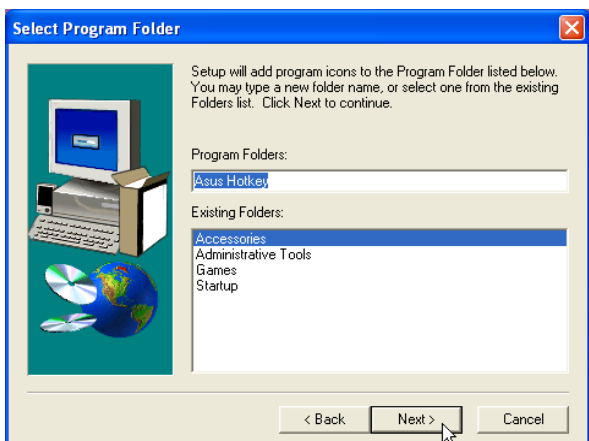
Insert the support CD and click **Hotkey Utility** on the autorun menu to start the installation wizard.



(1) Click **Next** after reading the welcome message.



(2) Choose another destination folder or click **Next** to use the default.



(3) Choose another folder, create a new folder, or click **Next** to use the default folder for the program icons.



(4) Installation has finished. **Deselect "...reboot Windows now."** and click **Finish** so that you can install other items and restart your computer later.

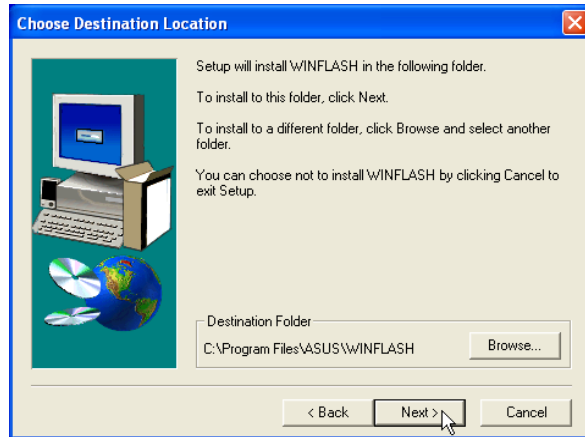
Windows Flash Utility (Under ATKACPI Utility)

Installing the Windows Flash Utility

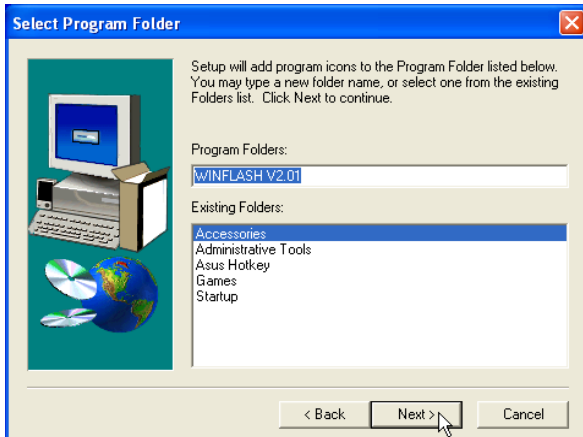
Insert the support CD and click **Windows Flash Utility** on the autorun menu to start the installation wizard.



(1) Click **Next** on the “Welcome” screen.



(2) Choose another destination folder or click **Next** to use the default.



(3) Choose another folder, create a new folder, or click **Next** to use the default folder for the program icons.



(4) Installation has finished. Select “**No...**” and click **Finish** to so that you can install other items and restart your computer later.

ASUS PC Probe (Under ATKACPI Utility)

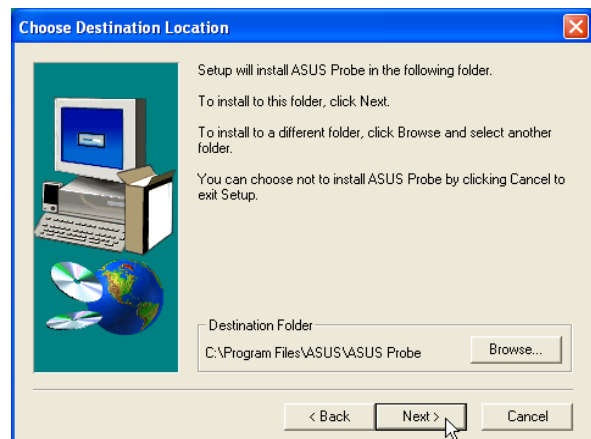
Installing PC Probe

Insert the support CD and click **PC Probe** on the autorun menu to start the installation wizard.

NOTE: In order for PC Probe to run, Intel's LDCM and other hardware monitoring software cannot be installed. You must first uninstall other such software before installing PC Probe.



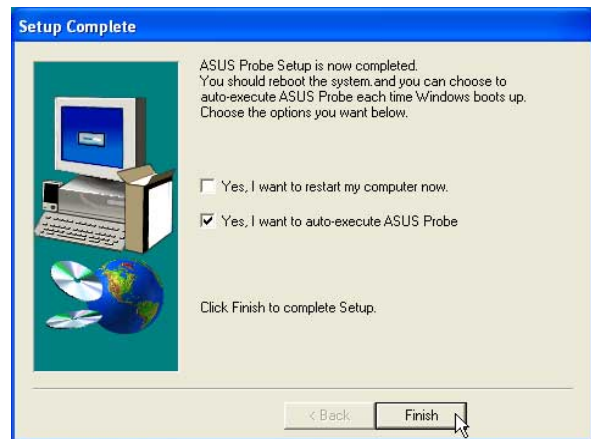
(1) Click **Next** after reading the welcome message.



(2) Choose another destination folder or click **Next** to use the default.



(3) Choose another folder, create a new folder, or click **Next** to use the default folder for the program icons.



(4) Installation has finished. **Deselect** "...restart my computer now." and click **Finish** to so that you can install other items and restart your computer later.

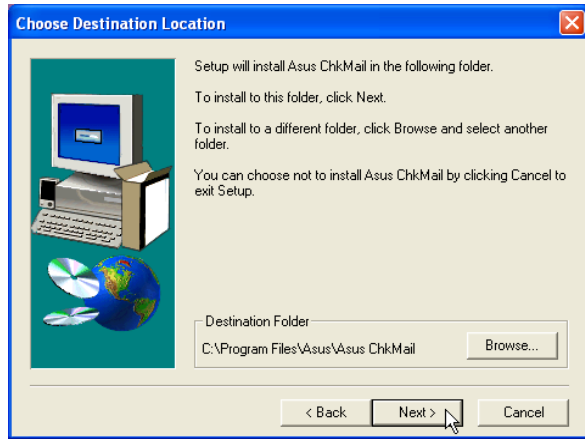
Check Mail Utility (Under ATKACPI Utility)

Installing Check Mail Utility

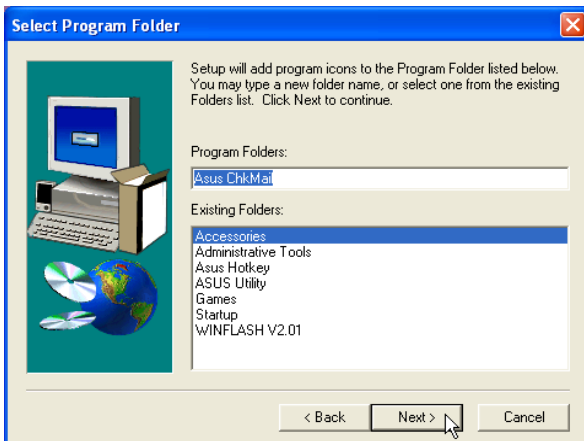
Insert the support CD and click **Check Mail Utility** on the autorun menu to start the installation wizard.



(1) Click **Next** after reading the welcome message.



(2) Choose another destination folder or click **Next** to use the default.



(3) Choose another folder, create a new folder, or click **Next** to use the default folder for the program icons.



(4) Installation has finished. **Deselect “...reboot Windows now.”** and click **Finish** so that you can install other items and restart your computer later.

Notebook PC

Software Reference

Screens will vary depending on your operating system but the contents should be the same.

Table of Contents

VGA Driver	27
Display Settings for Windows XP	28
Display Properties	28
LAN Driver	33
Joining a Domain or Workgroup (Windows ME)	34
Viewing Your Network	35
Joining a Domain or Workgroup (Windows XP)	35
Viewing Your Network	37
Synaptics TouchPad	39
Overview of Synaptics® TouchPad Features	40
Tap on the Pad Instead of Pressing the Buttons	40
Drag Icons, Windows and Other Objects without Using Buttons	40
Adjust the Overall Touch Sensitivity	41
Customize Buttons and Taps	41
Prevent Accidental Pointing While Typing	42
Scroll Through A Document without Using Scroll Bars	42
Zoom In/Out and Pan on Documents	42
Move the Pointer Long Distances	43
Fine Tune the Pointer Movement	43
Accessories	43
More About the TouchPad	43
Property Pages	43
Scrolling Properties Page	44
Tap Zones Properties Pages	45
More Features Properties Page	46
Button Actions Properties Page	47
Touch Properties Page	48
Edge Motion Properties Page	49
Frequently Asked Questions	50

PC-cillin 2000	53
Welcome to PC-cillin	54
What's New in PC-cillin 2000	55
What is a Computer Virus?	56
Test Virus	56
How Viruses Spread	57
Virus Writers	57
Hotkey Utility	59
Hotkey Utility	60
Buttons	60
Hotkey Actions	61
Adding a Program to Run	64
Windows Flash Utility (WINFLASH)	65
Updating Your BIOS	66
Resetting Your BIOS	66
ASUS PC Probe	67
Welcome to ASUS PC Probe	68
Starting ASUS PC Probe	68
Using ASUS PC Probe Monitoring	69
ASUS PC Probe Taskbar Icon	70
Check Mail Utility	71
Check Mail Quick Setup	72
Check Mail Startup	72
Using Windows Start Menu	72
Using MS Configuration	72

VGA Driver

Topics Covered:

Display Properties and Settings

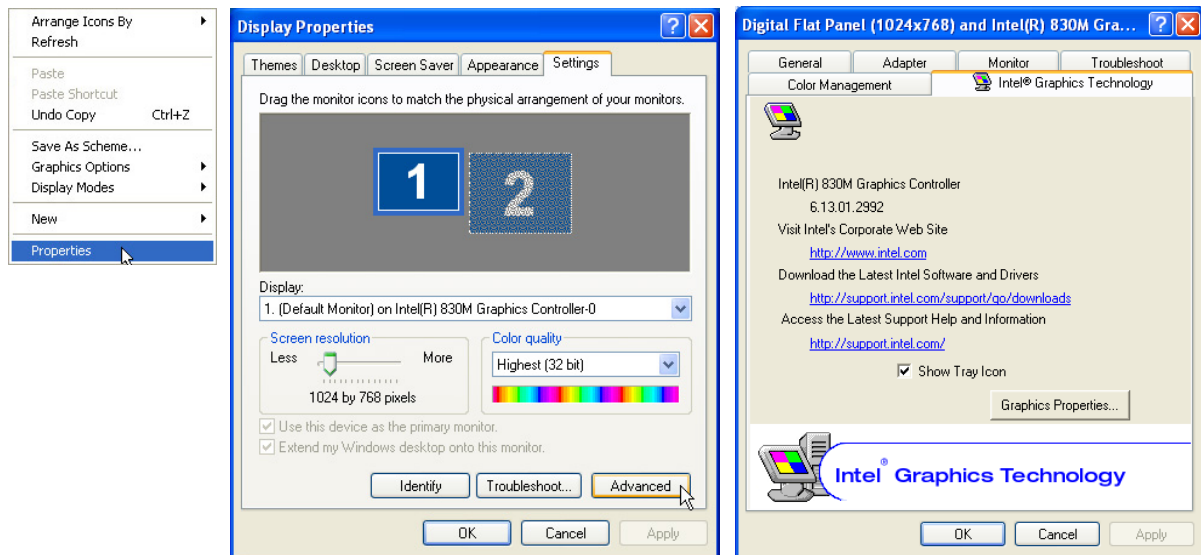
Screens will vary depending on your operating system but the contents should be the same.

Display Settings for Windows XP

Display Properties

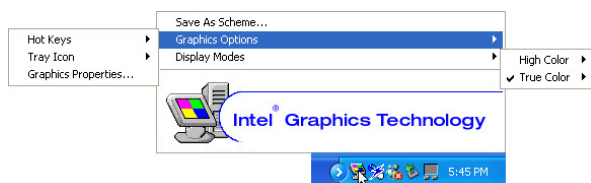
By right clicking your desktop and selecting **Properties**, you can view your display properties. For advanced graphics controller settings, click the **Advanced** button. Four tabs are provided with Windows and will not be introduced here. The **Intel Graphics Technology** tab was added after installing the VGA driver from the Notebook PC's support CD. Click **Graphics Properties** for advanced settings.

Using Windows Display Properties



Using the Taskbar Icon

Left click or right click the Intel Graphics icon on the taskbar to bring up shortcuts to graphics settings.



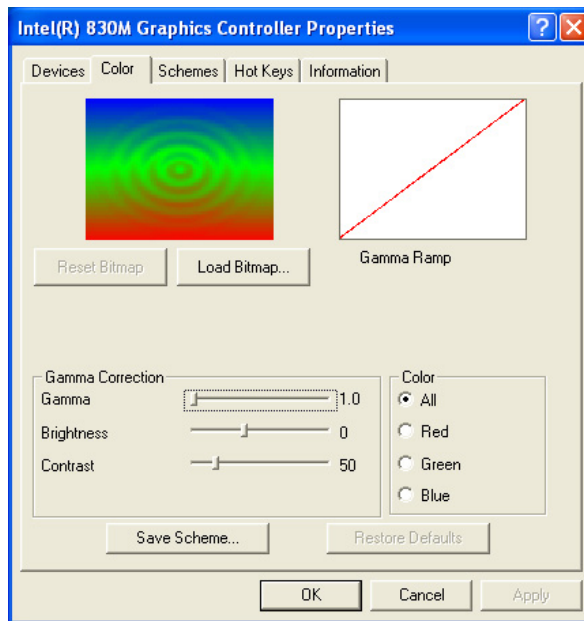
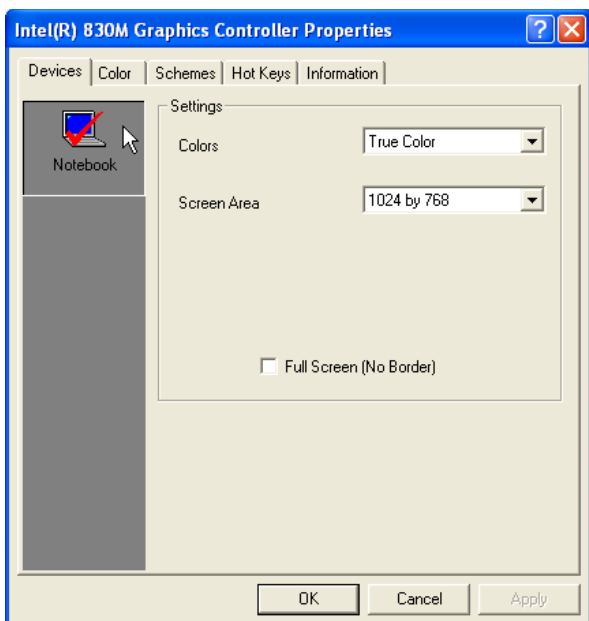
Intel Graphics Technology

The main page gives some basic information about the graphics controller and a few links to access information, drivers, or technical support from Intel.

This Notebook PC provides a complete network of information, drivers, and technical support that should be used in place of Intel's because this Notebook PC's technical support works directly with Intel to provide you complete services for your Notebook PC.

Find technical support and warranty information on the inside cover of the User's Manual or included in the Notebook PC's packaging.

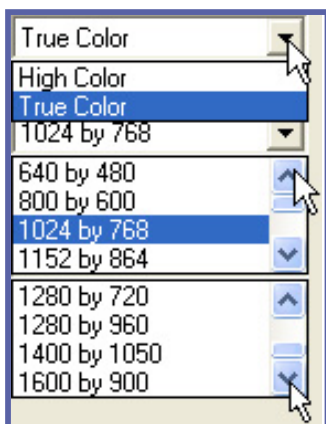
Display Settings for Windows XP (Cont.)



Devices (Notebook)

You can get to this screen by selecting **Graphics Properties...** from the taskbar icon or pressing the hot keys [ALT CTRL F12]. This screen allows you to select your display's color and screen area.

Note: Remember, screen areas larger than 1024 by 768 will result in panning to cover the extra area.



Color

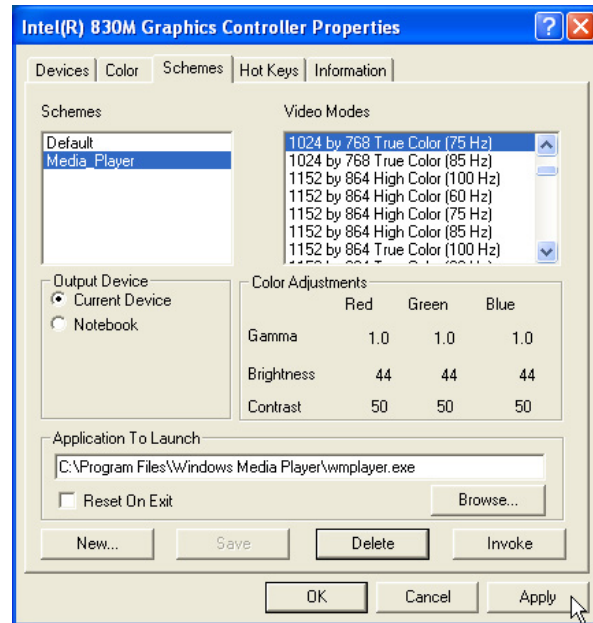
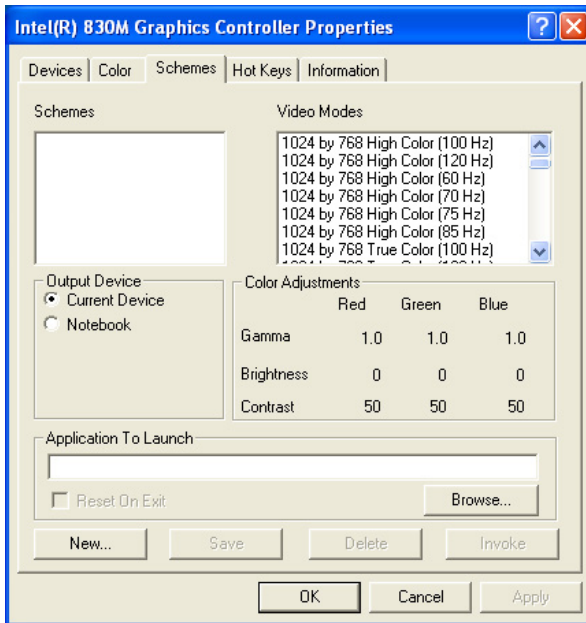
Use the **Color** page to correct gamma, brightness, or contrast. This can be done for each RGB color individually or all together.

When changes are made, **Restore Defaults** will be available to easily return to factory settings.

Load Bitmap allows you to load your own picture into the preview window. Click **Reset Bitmap** to return to the factory preview picture.

Save Scheme will place an entry in the "Schemes" page.

Display Settings for Windows XP (Cont.)



Scheme Example: Increase brightness and launch Media Player.

Schemes

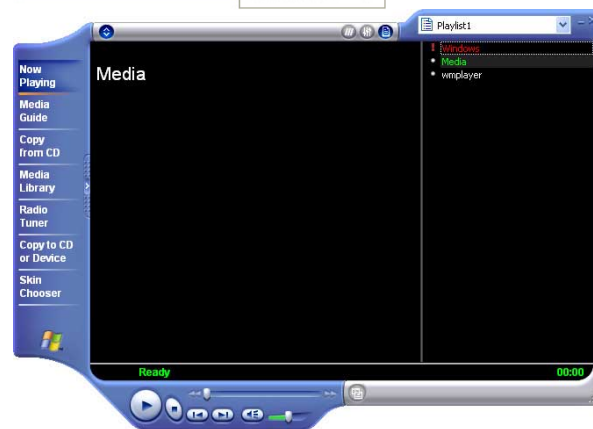
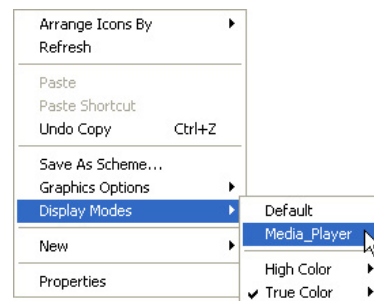
On the Schemes page, you can also save “Video Modes” (resolution and color) and launch an application at the same time.

Deleting a Scheme

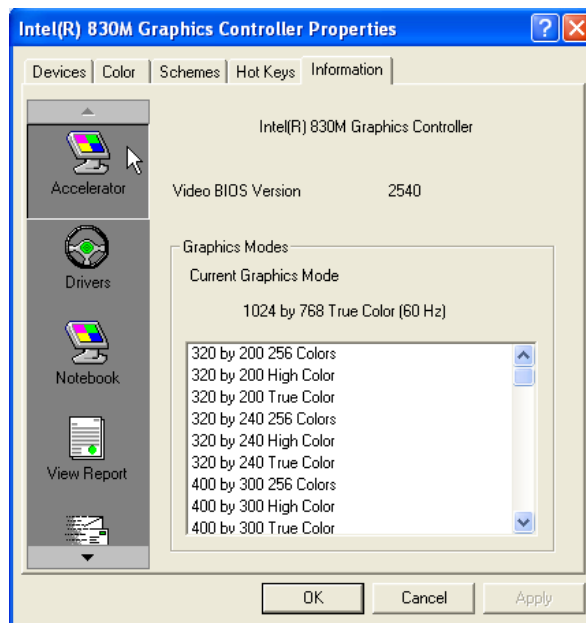
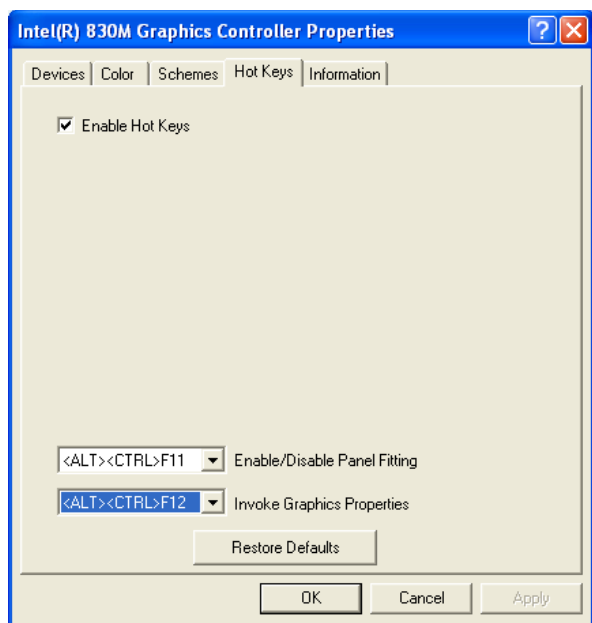
There are no factory defined schemes. To delete a user-defined scheme, click on a scheme and click the **Delete** button. A confirmation with the name of the scheme will be shown. Click **OK** to proceed with deleting the scheme.

Quick Launching a Scheme

To launch your scheme, simply right-click your desktop and select a saved scheme.



Display Settings for Windows XP (Cont.)



Hot Keys

Hot Keys allow you to quickly access Intel's Graphics Controller Properties. You can change or disable this function if it interferes with another software's hot keys.

Information

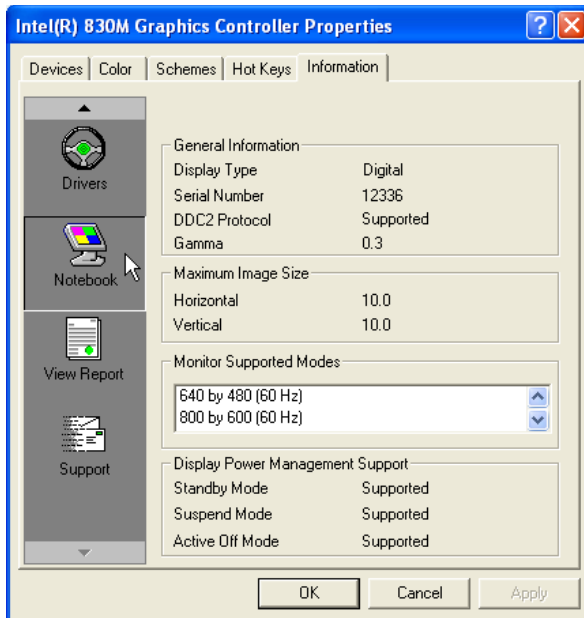
Accelerator: You can see the current graphics mode and all the supported graphics modes.

Drivers: View information about the graphics drivers.

Notebook: (see next page)

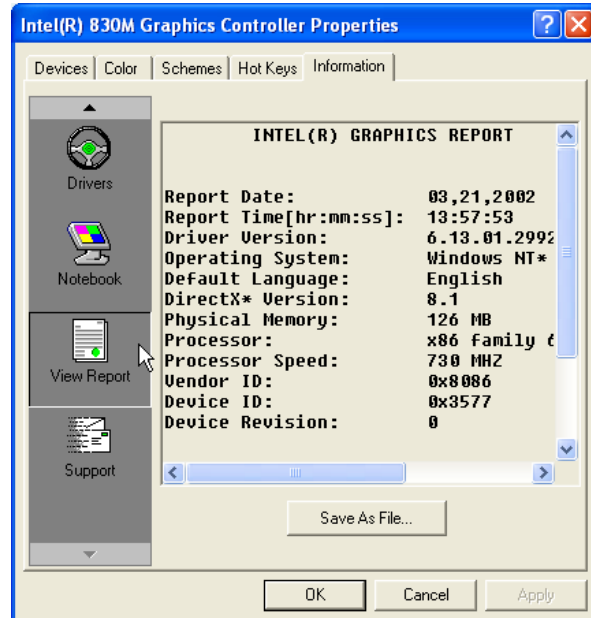
View Report: (see next page)

Display Settings for Windows XP (Cont.)



Information - Notebook

The Notebook page shows you graphics features that are supported by this Notebook PC.



Information - View Report

The Report page allows you export information about your graphics driver to a text file so that you can include it in technical support requests or for your own information.

Click the link to access technical support on Intel's web site. Again, you should first use the technical support provided by your Notebook PC retailer.

To export the information, click **Generate** and select a location for the file.

LAN Driver

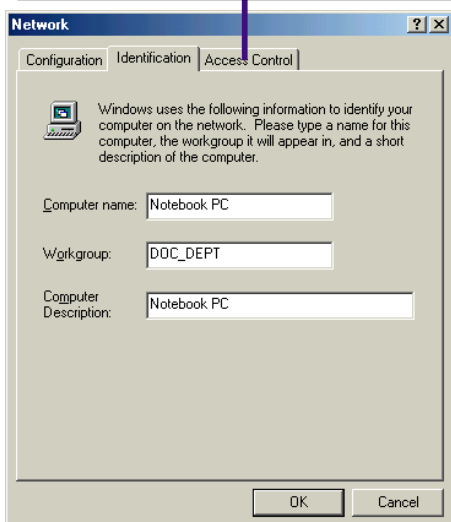
Topics Covered:
Joining a Domain or Workgroup

Screens will vary depending on your operating system but the contents should be the same.

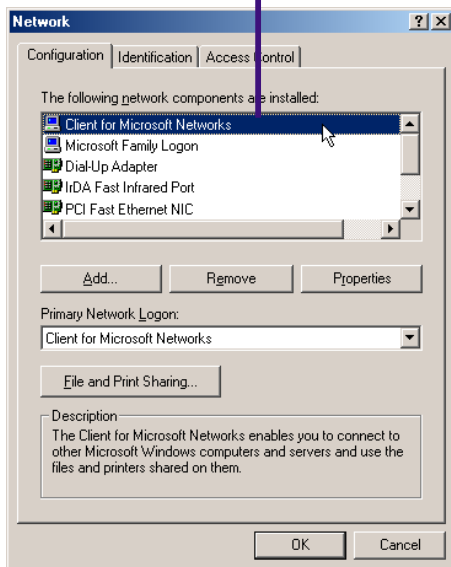
Configuring the Network Device

Joining a Domain or Workgroup (Windows ME)

Use the tabs for other network settings.



Double click on the Network driver to make logon settings.



Identification is necessary to use the network browser. Enter a workgroup as instructed by your network administrator or try using the name of your domain. All servers may not be visible to you if you do not enter a workgroup that has a primary controller.

Viewing Your Network



My Network Places

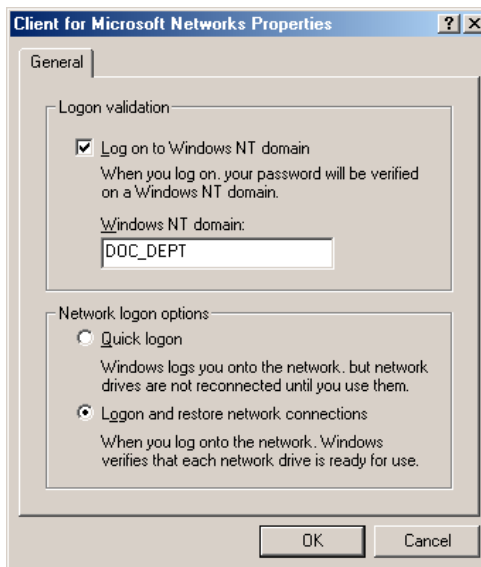


Entire Network

You may also view the [entire contents](#) of the network.



Microsoft Windows Network



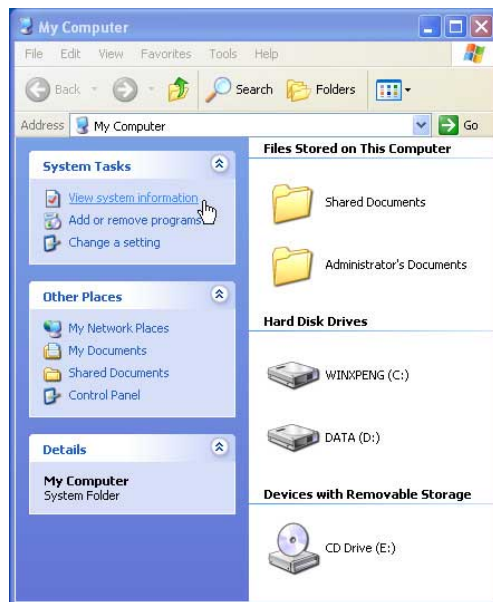
If you want to log into a server, you must check "Log on..." and enter your domain name. Windows 95/98/ME/XP all use Windows NT domain. The primary server in the domain will perform routing and login functions for your computer.

Configuring the Network Device

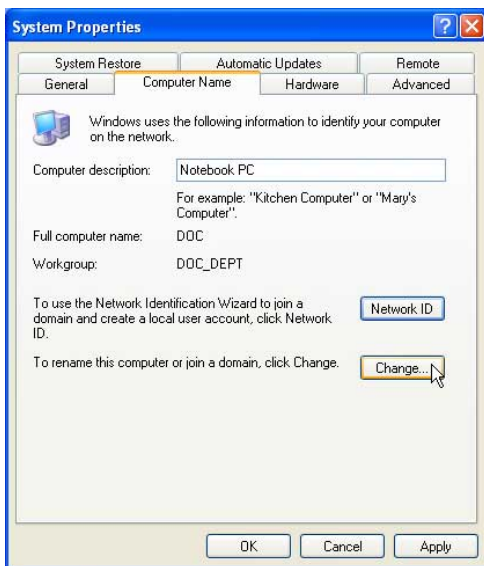
Joining a Domain or Workgroup (Windows XP)



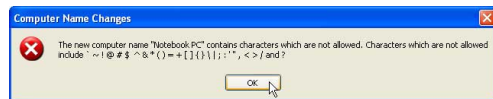
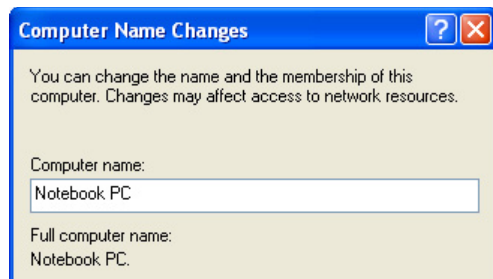
(1) Click **Start** and **My Computer**.



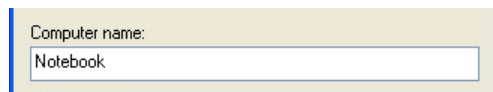
(2) Click **View system information**.



(3) Your computer name, workgroup or domain information is shown here. Click **Change** to view options.

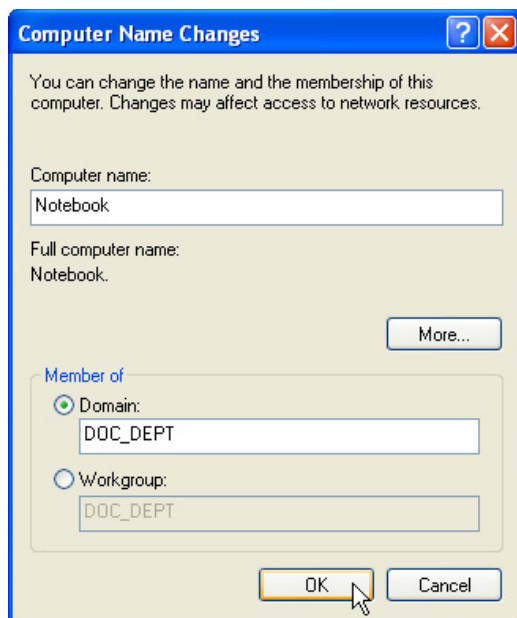


You cannot use spaces or symbols in the computer name. In the example here, a warning is given when trying to use "Notebook PC". You can use the single word "Notebook" instead.



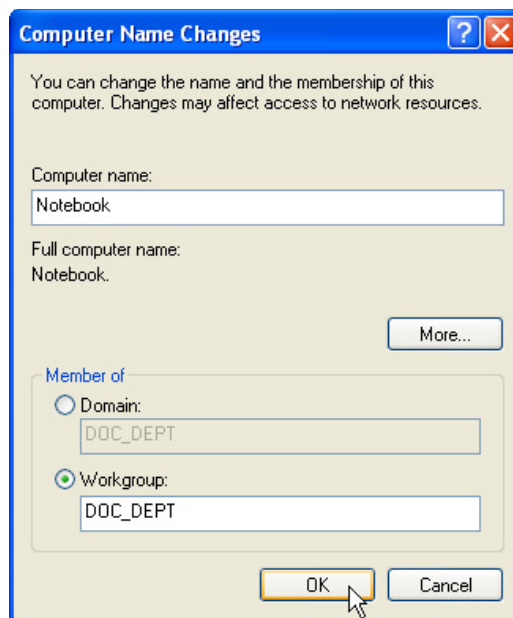
Configuring the Network Device

Joining a Domain or Workgroup (Windows XP) (Cont.)



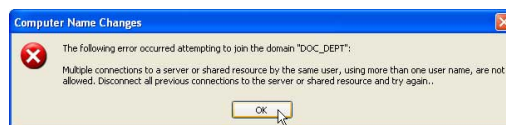
(4a) Domain:

The primary server in the domain will perform routing functions and security verifications for your computer. Select **Domain** and enter an existing domain you wish to join. **NOTE:** After clicking "OK", you will be asked for the Domain Controller's Administrator password to join the domain in Windows XP.



(4b) Workgroup:

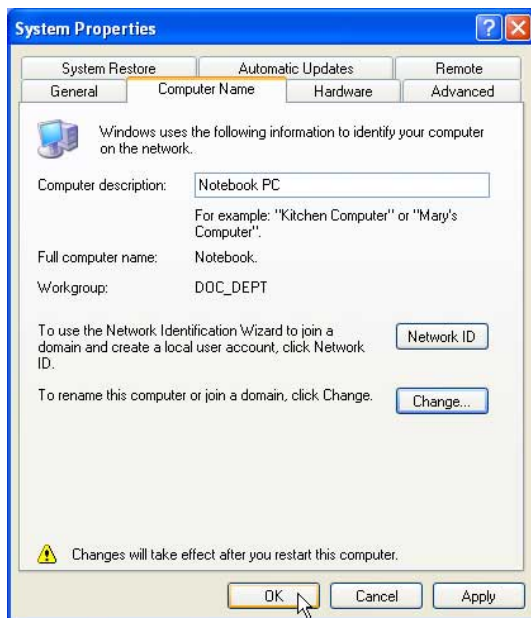
If your network does not have a domain or you are not authorized to join a domain, select **Workgroup** and type in an existing name or create your own (by typing an unused workgroup name)



Administrator Name or Password not accepted: You cannot login with the Administrator name and use one password, then use the Administrator name with another password to add to a domain. You must login using another name. See Windows documentation to "Add New User" from User Accounts in the Control Panel.

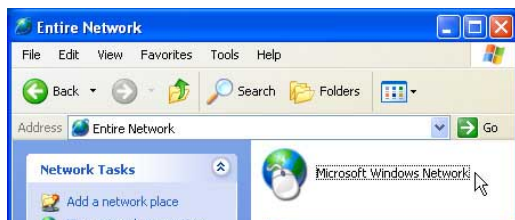
Configuring the Network Device

Joining a Domain or Workgroup (Windows XP) (Cont.)



(5) After you restart your computer, you should see some contents through Entire Network.

Viewing Your Network



(6) Clicking on "My Network Places" will display networks which you have installed protocols for. Clicking a network protocol such as "MS Windows Network" will display all the servers available under that protocol.



Synaptics TouchPad

Topics Covered:

Overview of the TouchPad

Scrolling Properties Page

Tap Zones Properties Page

More Features Properties Page

Button Actions Properties Page

Touch Properties Page

Edge Motion Properties Page

Frequently Asked Questions

Screens will vary depending on your operating system but the contents should be the same.

Overview of Synaptics® TouchPad Features

Your Synaptics TouchPad is much more powerful than an old-fashioned mouse. In addition to providing all the features of an ordinary mouse, your TouchPad allows you to:

- Tap on the Pad Instead of Pressing the Buttons
- Drag Icons, Windows and Other Objects without Using Buttons
- Adjust the Overall Touch Sensitivity
- Customize Buttons and Taps
- Prevent Accidental Pointing While Typing (also known as Palm Check)
- Scroll Through a Document Without Using Scroll Bars
- Zoom In/Out and Pan on Documents
- Move the Pointer Long Distances
- Fine Tune the Pointer Movement

Tap on the Pad Instead of Pressing the Buttons

Tapping on the surface of the pad is the same as clicking the left mouse or TouchPad button (i.e. the primary TouchPad button). Tapping is usually quicker and more convenient than using the button. To double-click, just tap twice. A light, quick tap works best; very hard or very slow taps are less likely to work.

Drag Icons, Windows and Other Objects without Using Buttons

Often, you need to hold the mouse or TouchPad button down while moving the pointer (to move an icon or window around the screen, for example). This action is called dragging. Just like clicking and double clicking, you can also drag without using the button.

To move or drag an object (equivalent to pressing and holding the left TouchPad button):

- 1) Position the pointer over the object and tap twice, down-up-down, leaving your finger on the TouchPad on the second tap. This action is sometimes called tap-and-a-half.
- 2) Now move the selected object by sliding your finger across the TouchPad surface.
- 3) Lift your finger to drop the object.

Tap-and-a-Half

You might wonder what happens when you reach the edge of the pad and you are dragging an object. The Synaptics TouchPad has a feature called Locking Drags. This feature allows you to lift your finger from the pad without ending the drag. You can drag an object across the screen using several finger strokes. To end a Locking Drag action, tap again. The Synaptics TouchPad also has a feature called Edge Motion to help with long distance dragging. See Move the Pointer Long Distances for details.

The Tap and Drag and Locking Drags features are located on the Touch Properties Page in the Mouse Properties dialog.

Adjust the Overall Touch Sensitivity

You can control how much finger pressure you must apply before the TouchPad responds by adjusting the Touch Sensitivity slider. This slider is located on the Touch Properties Page in the Mouse Properties dialog.

At higher (more sensitive) Touch Sensitivity settings, the TouchPad recognizes even a very slight touch. If you see undesired or erratic pointer motion, try a lower setting. Lower (less sensitive) settings require a firmer touch to move the pointer. In general, a lighter touch works best.

Customize Buttons and Taps

Most TouchPads come with two buttons that work just like traditional mouse buttons. You can customize the behavior of these buttons.

Tapping on the TouchPad surface also performs the same action as pressing a button. Tapping in the center of the pad will always produce a left-click (the action of the primary button), but you can configure each of the four corners of the TouchPad surface to act as different buttons. These special corner regions are called tap zones. With four corner tap zones, the center of the TouchPad, and the two physical buttons you can turn your TouchPad into a seven-button mouse!

A customization example:

Suppose you want to use your TouchPad like a three-button mouse. You can configure the left TouchPad button to produce middle clicks when pressed. Remember that tapping on the TouchPad will produce left clicks, and pressing the right TouchPad button will produce right clicks. For additional convenience, you can configure the top right corner tap zone of the TouchPad to produce right clicks. Looking at the TouchPad surface in the picture below, taps in the top right corner (the red shaded area) will produce right clicks, but tapping anywhere else on the TouchPad (the solid gray area) produces left clicks.

An Example TouchPad

There are many different actions that you can assign to the buttons and tap zones. The following actions are provided as built-in features with the Synaptics TouchPad device driver. Additional actions might be available if you have installed any third-party TouchPad Plug-In software.

- **Jump to the Start Button.** This action causes the pointer to jump to the Start button in the Windows task bar and automatically opens the Start Menu.
- **Jump to the current application's menu.** This action causes the pointer to jump to the leftmost entry in the application's window menu (usually the File menu) and automatically pops up the submenu.
- **Minimize the current application.** This action minimizes the current application's window. If the current application's window is already minimized, this action will restore it to its normal size and location.
- **Maximize the current application.** This action maximizes the current application's window (expands it to cover the full screen). If the current application's window is already maximized, this action will restore it to its normal size and location.
- **Run a program of your choosing.** This action allows you to specify the name of any program you want to run automatically when you click the button or tap in the tap zone.

To customize taps and buttons, go to the Button Actions Properties Page in the Mouse Properties dialog.

Prevent Accidental Pointing While Typing

Unintentional pointer movement and accidental taps can be caused by accidentally brushing the surface of the TouchPad with your palm or another part of your hand. The results of this contact can be observed as a changing cursor location when typing, causing subsequent text to appear in the wrong place. Or text may “spontaneously” be highlighted and replaced. Most often, this unwanted pointing activity occurs when typing on the keyboard. The TouchPad can detect and prevent accidental and unwanted pointer movement while you are typing.

If you see unwanted pointer movement occurring while you are typing, you can adjust the Palm Check slider located on the Touch Properties Page in the Mouse Properties dialog. Move the slider thumb to the right towards Maximum. Now accidental brushes of your hand on the TouchPad while you are typing are more likely to be ignored.

On the other hand, in the midst of typing, you might purposefully use the TouchPad to point and click, and sometimes the TouchPad may not seem to respond. In this case, move the slider thumb to the left towards Minimum. Now pointing during typing is less likely to be interpreted as an accidental brush with the pad surface, and will not be ignored.

Scroll Through A Document without Using Scroll Bars

Virtual Scrolling allows you to perform a very common task – scrolling documents – without having to move the pointer away from your work. By simply sliding your finger up and down the right edge of the TouchPad, the contents of the current window will scroll vertically. Similarly, by sliding your finger left and right along the bottom edge of the TouchPad, the contents will scroll horizontally. You no longer need to laboriously maneuver the pointer to the small scroll bar elements; you can scroll no matter where the pointer happens to be.

Virtual Scrolling works with document windows (like word processors and spreadsheets), and it also works with file lists, font lists, and other scrollable items. As a rule, you can use Virtual Scrolling when you are working in any window that has a scroll bar.

And Virtual Scrolling does more than just make scrolling more convenient. It also can make scrolling smoother. When you scroll by dragging the scroll thumb with the mouse, many applications do not re-display the document window until you release the mouse button. Virtual Scrolling makes navigation through documents easier, because it forces the application to re-display the window contents as you scroll.

How do I use Virtual Scrolling?

To customize the Virtual Scrolling feature, go to the Scrolling Properties Page located in the Mouse Properties dialog.

Zoom In/Out and Pan on Documents

Note that zooming and panning only work in applications that support the Microsoft Intellimouse. With Intellimouse aware applications, you can zoom and/or pan to quickly maneuver your way through lengthy documents. To jump to a distant location within your document, zoom out, click on the desired location, then zoom in. To scroll horizontally and vertically at the same time, simply pan in a diagonal direction!

Move the Pointer Long Distances

Suppose you are dragging an object, scrolling at high speed (via Virtual Scrolling!), or merrily moving the pointer when you suddenly reach the edge of your TouchPad. Don't despair, the Synaptics TouchPad Edge Motion feature comes to the rescue! Edge Motion helps with long distance pointer motion. When you reach an edge of the TouchPad, the pointer (or scroll thumb when Virtual Scrolling) continues to move in the same direction until you lift your finger from the TouchPad or move your finger away from the edge.

Edge Motion speed can be pressure-sensitive or constant. Pressure-sensitive speed means that the harder you press, the faster the object or pointer moves.

You can configure the Edge Motion feature on the Edge Motion Properties Page in the Mouse Properties dialog.

Fine Tune the Pointer Movement

The Synaptics TouchPad has many additional features to help you control the way your pointer moves. Please take a look at the list of additional features.

Accessories

Your TouchPad is a productivity enhancing tool, designed for serious work. But we think it should also be fun. We have included two fun application programs that demonstrate some of the capabilities of the TouchPad: Pressure Graph and The Incomparable, Mysterious Synaptics MoodPad.

To run these applications, click once on the Synaptics TouchPad Icon in the Taskbar, go to the Accessories menu and select the desired application.

More About the TouchPad

The TouchPad detects your finger by capacitive sensing (it is not sensitive to heat or applied force). As your finger approaches the pad, it alters the electric field in the vicinity of the pad surface. The TouchPad sensor is just a circuit board with a matrix of conductive traces printed on the top surface. A special chip on the back side of the TouchPad continuously measures the capacitance of these traces, and thus can determine the presence and location of your finger.

To get the most out of your TouchPad, be sure that the TouchPad driver software is installed. If the Synaptics TouchPad driver is properly installed, the Mouse Properties dialog will include several TouchPad tabs along the top in addition to the standard mouse tabs.

Property Pages

The property pages allow you to customize TouchPad settings for your Notebook PC. The following pages will describe each property page with the Synaptics logo. The "Buttons", "Pointers", and "Pointer Options" pages come with Windows and should be described in Windows documentation.

Scrolling Properties Page

The Scrolling properties page allows you to customize the Virtual Scrolling capabilities of your TouchPad.

In some applications, the scroll zones which activate Virtual Scrolling can be used for zooming too.

Enabling Virtual Scrolling of the Active Window

Check the appropriate boxes on this page for the type of Virtual Scrolling that you prefer:

- Horizontal Scrolling
- Vertical Scrolling
- Coasting

Choose where you want Virtual Scrolling to occur:

- Scroll Selected Item

- OR -

- Scroll Item Under Pointer

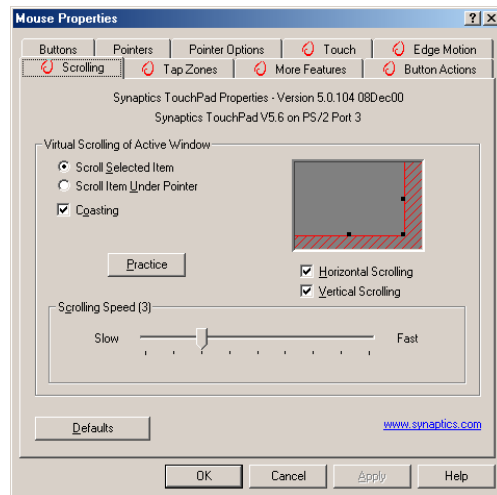
Customizing Scroll Zone Sizes

This page includes a small map of the TouchPad with the scroll zones shaded in red. See the Scroll Zone TouchPad Map for a more detailed description.

You can adjust the size of each zone by dragging one of the black resize handles on the TouchPad map. If you are having trouble activating the Virtual Scrolling feature, you might want to try making the scroll zones wider. If you find that scrolling sometimes gets activated when you didn't mean to scroll, try narrowing the scroll zones.

Customizing Virtual Scrolling Speed

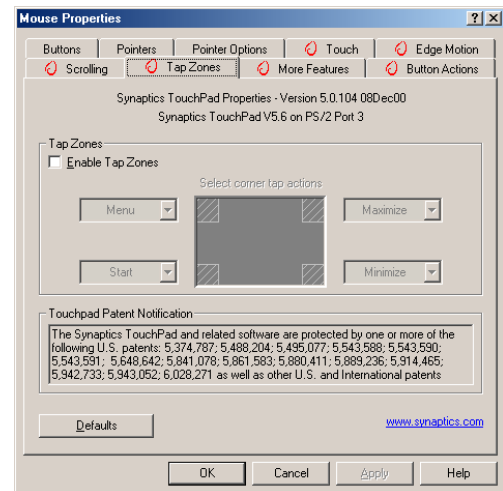
You can control the speed of Virtual Scrolling by adjusting the Scrolling Speed slider on this page. Drag the slider thumb to the right for faster scrolling.



Tap Zones Properties Pages

The Tap Zones properties pages allow you to assign custom actions to taps in the Touchpad's corner zone regions (or tap zone regions).

The Synaptics TouchPad driver may also control other pointing devices attached to your system. If the Synaptics TouchPad driver is controlling more than one pointing device on your system, the Synaptics pages on the Mouse control panel will have a drop-down box listing all of the pointing devices that are controlled. You may set separate settings for each by selecting the appropriate device (settings which don't apply to a particular pointing device will be grayed out).



Customizing the Tap Zones

When the tap zones are enabled, each tap inside a corresponding tap zone region on your TouchPad can have a different meaning or action. For example, you can define the upper right corner tap zone to mean right clicks. Then when you tap your finger on the upper right corner of your TouchPad, it is as if you are clicking the right mouse or TouchPad button.

This page includes a small map of the TouchPad with the active tap zones shaded in red. Next to each zone is a text box specifying the action for that zone.

To Customize:

1. To activate the corner tap zones, check the box next to the text Enable Tap Zones. An unchecked box means that all taps on every part of the TouchPad surface will have left-click behavior.
2. To change an action for a particular zone, locate the text box nearest the zone. The text box displays the current action for this zone (for example, it might say No Zone which means that this particular zone is disabled and any taps here will produce the default left-click action). Click on the down arrow button located to the right of the text to display a list of actions. Select the desired action.
3. Each tap zone can be resized to be as large or as small as you desire by dragging one of the black resize handles located on the TouchPad map.

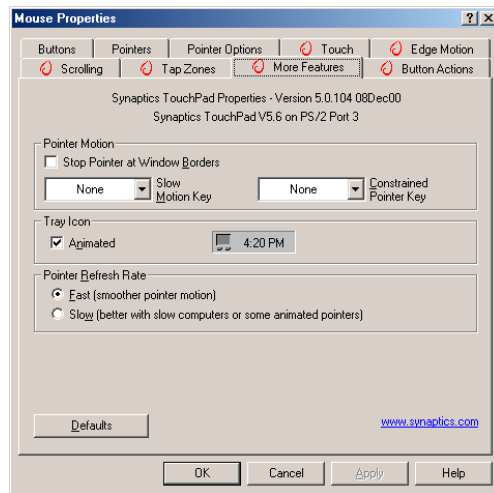
More Features Properties Page

The More Features properties page allows you to control the following features of your Synaptics TouchPad:

Stop Pointer at Window Borders

This feature constrains the pointer to stay inside the active window. When you try to move the pointer outside the window, it stops at the edge. If you try a second time, the pointer is free to leave the window.

Stopping the pointer at the window borders makes it easy to access controls that lie around the edges of windows. For example, to close or resize a window, you can casually toss the pointer in the general direction of the close box or the edge of the window, and the pointer will stop exactly where you want it.



Snap to Default Button

This feature automatically moves the pointer to the Default Button when a dialog box appears on your screen.

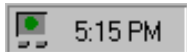
Slow Motion Key

Sometimes you might need more accuracy when pointing with the TouchPad, such as in a drawing program. The speed of the pointer can make this type of accuracy difficult to obtain. To slow down the pointer movement, you can specify a slow motion key. Then, for slow pointer movement, press and hold this key as you move the pointer.

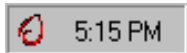
Constrained Pointer Key

At times you may want to restrict the pointer to move only horizontally or only vertically. You can specify a constrained pointer key, then press and hold this key as you move the pointer. The initial pointer direction when holding this key determines whether the pointer is constrained to move only horizontally or only vertically.

Synaptics TouchPad Tray Icon



The Synaptics TouchPad tray icon appears in the Windows Taskbar near the clock. You can choose between two icons:



This is the animated Touch Meter icon. The size of the dot on the touch meter indicates the amount of finger pressure. The icon turns blue while Virtual Scrolling is in progress.

This is the non-animated Synaptics logo icon.

You can access the “TouchPad Properties” dialog by double clicking on either tray icon.

Button Actions Properties Page

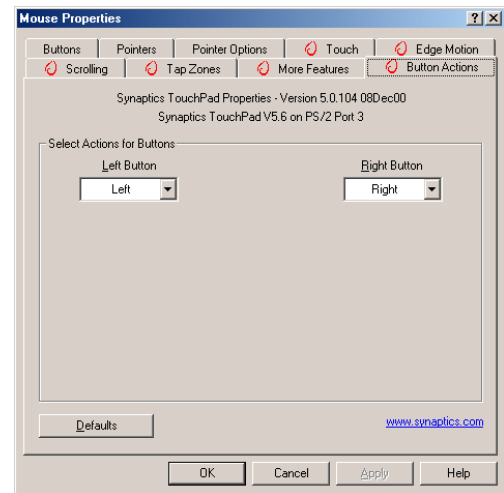
The Button Actions properties page allows you to customize the physical buttons of your TouchPad.

Customizing Button Assignments

You can customize the TouchPad buttons in the same way that you customize the tap zones.

To Customize:

Each button has a text box that displays the current action (for example, it might say Left, which means the left-click or primary-click action). To display a list of possible actions, click on the down arrow button located to the right of the text. Select the desired action.



Touch Properties Page

The Touch properties page allows you to customize the tap response and sensitivity of your TouchPad.

Taps

Check the appropriate boxes in the Taps section of the Touch Properties Page for the tapping capabilities that you prefer:

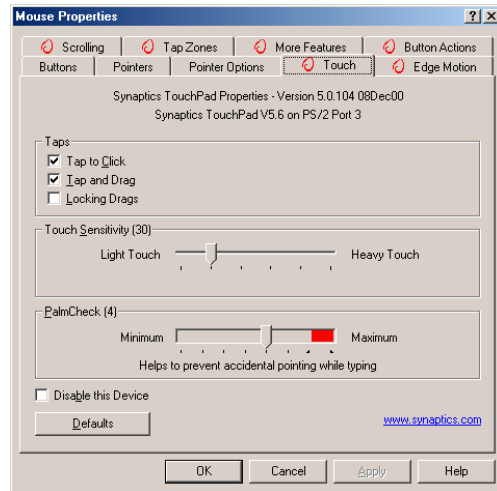
- Tap to Click
- Tap and Drag
- Locking Drags

Touch Sensitivity

Use the Touch Sensitivity slider to control how much finger pressure you must apply before the TouchPad responds. See Adjust the Overall Touch Sensitivity.

Palm Check

The Palm Check slider controls the TouchPad's detection of accidental and unwanted pointing movement. In addition to detecting palm contact with the TouchPad, the TouchPad can ignore much of the accidental and unwanted pointer movement that may occur while typing (due to accidentally contacting your TouchPad). See Prevent Accidental Pointing While Typing for more details.



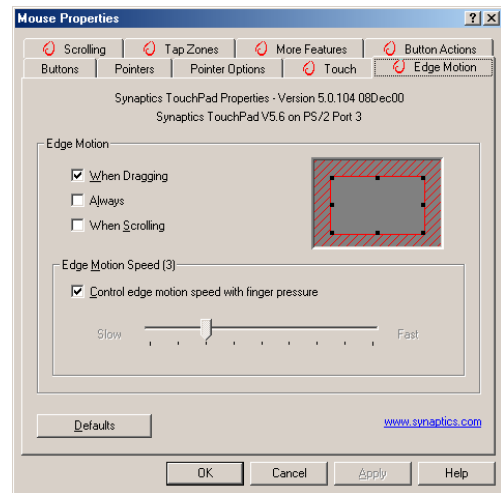
Edge Motion Properties Page

The Edge Motion properties page allows you to customize the long distance pointer motion capabilities of your TouchPad. When your finger reaches the edge of your TouchPad, the Edge Motion feature allows the pointer to continue to move until you lift your finger. See *Move the Pointer Long Distances* for more details about the Edge Motion feature.

Enabling Edge Motion

Check the appropriate boxes on this page for the types of Edge Motion that you desire:

- When Dragging
- Always
- When Scrolling



Customizing Edge Zone Sizes

This page includes a small map of the TouchPad with the edge zones shaded in red. See the *Edge Zone TouchPad Map* for a more detailed description. You can adjust the size of each zone by dragging one of the black resize handles on the TouchPad map. If you are having trouble activating the Edge Motion feature, you might want to try making the edge zones wider.

Customizing Edge Motion Speed

During Edge Motion, the speed at which the pointer (or dragged object or Virtual Scrolling scroll thumb) moves can be pressure-sensitive or constant. With pressure-sensitive speed, the harder you press the faster the object or pointer moves. For this type of speed, check the box labeled *Control edge motion speed with finger pressure*.

If you prefer a constant speed for Edge Motion, you can adjust the speed with the *Edge Motion speed slider* located on this page.

Frequently Asked Questions

Q: When I use Virtual Scrolling, the pointer jumps over to the scroll bar, and then jumps back where it came from when I'm done. Is this normal?

A: Yes.

Q: Why doesn't the Virtual Scrolling feature work in some windows, even though they have a scroll bar?

A: In order to scroll, Virtual Scrolling must be able to "see" the window's scroll bar. If the scroll bar is partially obscured by another window, or partially off the screen, then Virtual Scrolling will not activate in that window. In general, a window's scroll bar must be entirely on the screen, and fully visible, in order to use Virtual Scrolling in that window. There is an exception to this rule: Virtual Scrolling has "special knowledge" about many common types of windows, and can scroll them even if their scroll bars are not visible on the screen. A very small number of applications use nonstandard scroll bars that might not work reliably with Virtual Scrolling.

Q: Why do some windows scroll smoothly, while others re-display their contents only occasionally as I scroll?

A: The way a window responds to its scroll bars is entirely up to the application which owns that window. Some applications "smooth-scroll," while others wait until you release the scroll bar before updating their contents. Virtual Scrolling "knows" about many common applications and window types, and uses this knowledge to "trick" many windows into smooth-scrolling (Microsoft® Word™ document windows, for example, do not normally smooth-scroll, but they do when you use Virtual Scrolling). If Virtual Scrolling does not "know" about a particular type of window, it still approximates smooth-scrolling by causing the window to re-display when your finger slows down or stops. This can help you more accurately scroll to the right place in a document.

Q: Why does the scroll thumb sometimes "jump around" when I scroll, and not go exactly where the pointer is?

A: Again, the application actually has complete control over the way the scroll thumb moves. Depending upon the window contents, some applications will actually prevent you from moving the scroll thumb to certain locations. Sometimes, the scroll thumb is only "allowed" to come to rest at one or two positions along the scroll bar! In these cases, even if you were to manually drag the scroll thumb with the pointer, you would find that it would "jump" to a final location when you released it. Virtual Scrolling, unfortunately, cannot control how applications manage their scroll bars.

Q: Why doesn't Virtual Scrolling work properly with Microsoft Internet Explorer?

A: Make sure you are using Internet Explorer version 4.01 or later, and that the Use Smooth Scrolling option on the Advanced page of the Internet Explorer Properties dialog is NOT checked.

Q: When I press and hold the shift key or the control key (CTRL), the pointer movement is either very slow or restricted to move only horizontally or only vertically. What is happening?

A: The shift keys and the control keys are special and are used for various things, such as selecting multiple files in Microsoft Windows Explorer or for zooming in and out on a spread sheet in Microsoft Excel. These keys can also be used for special pointer movement, such as for slowing the pointer down or for constraining the pointer to move only horizontally or only vertically. For example, you can assign the left shift key to be the Slow Motion Key. Then when you press and hold the left shift key, the pointer motion will be slower than usual. Note that you can still use this shift key for other special behaviors! You can still press and hold the left shift key to select multiple files in Microsoft Windows Explorer, but the pointer motion will also be a bit slower. If you see slow or constrained pointer movement when pressing shift or CTRL and you want to turn off this special behavior, go to the More Features Properties Page in the Mouse Properties dialog and uncheck the appropriate boxes.

PC-cillin 2000

Topics Covered:

PC-cillin 2000 Features

What's New in PC-cillin 2000

Test Virus

What is a Computer Virus?

How Viruses Spread

Virus Writers

Screens will vary depending on your operating system but the contents should be the same.

Welcome to PC-cillin

Welcome to PC-cillin 2000, Trend Micro's award-winning antivirus software.

Here's what PC-cillin will do "straight out of the box":

- Checks for viruses every time you Open, Copy, Move, or Save a file
- Protects against downloading infected files from the Internet or FTP sites
- Guards against malicious Java applets and ActiveX controls while web surfing
- Monitors your Word and Excel sessions for macro viruses, using MacroTrap™
- Scans and cleans all files on your hard drive every Friday
- Scans all program files for viruses every month Checks all your saved documents for macro viruses.

Here's what you can do with just the click of a button:

- Scan every file on your system and clean any infected files
- Scan any file from Windows Explorer or My Computer by right-clicking the file icon
- Scan floppy diskettes and clean any infected files
- Check all of your Word and Excel document(s) for macro viruses
- If you use Outlook Express 4.0 or above or Eudora Pro 4.0 or above email clients, scan your email message attachments as they are being downloaded from the POP3 email server.
- Manually scan message attachments in your local Outlook folders

No Limits

Of course, if you're a person who likes to customize your software, there is no limit to the Scan tasks you can configure PC-cillin to perform.

You can "set and forget" as many tasks as you see fit. For each task, you can select the file types you want to scan for viruses, the action PC-cillin will take upon finding a virus (Clean the infected file, Delete it, Quarantine it, Pass it, or Rename / Deny Access to it), and other program details.

Scan Engine

Viruses are detected using Trend's 32-bit, multi-threaded scan engine and a process called pattern matching. In addition to catching known viruses, PC-cillin detects and intercepts previously unknown polymorphic, or mutation, viruses.

MacroTrap

Additional layers of protection come from MacroTrap™, Trend's macro virus scanning engine, which detects and removes both known and unknown macro viruses.

What's New in PC-cillin 2000

PC-cillin 2000 includes the following enhancements over the previous version:

- **Windows Support:** PC-cillin fully supports Windows. Integration with the Windows installer means that you can install PC-cillin while installing other Windows components. PC-cillin is Windows compliant.
- **Antivirus scanning of POP3 mail:** If you use Microsoft Outlook Express 4.01 or above or Eudora Pro 4.0 or above as your email client, Trend PC-cillin 2000 will scan your email messages as they download from the POP3 server. Virus-infected attachments are stopped before they ever reach your computer!
- **Virus Scanning of Local Outlook Folders:** If you use Microsoft Outlook as your email client, Trend PC-cillin 2000 provides on-demand scanning of local folders for virus-infected attachments. Trend PC-cillin will automatically detect an installed copy of Microsoft Outlook on the computer and enable the user interface elements that permit the use of this feature. Please note that this feature does not scan messages stored on a Microsoft Exchange server, but only scans messages in local folders.
- **Incremental Virus Pattern Download:** No longer do you have to download the entire virus pattern file when updating your software. Trend PC-cillin 2000 supports incremental pattern updates whereby only the virus patterns that have changed since the last update are downloaded. This greatly reduces the download time, saving time and expense that you have to spend on Internet connection charges.
- **PC-cillin Can Scan Virtually All Media:** PC-cillin 2000 can scan the following types of drives in addition to conventional hard disk drives: CD-ROM, CD-R, CD-RW, PD, FDD, DVD, ZIP and LS120.
- **PCSCAN Command Line Scanner Supports Pattern Files Larger Than 1.44 MB:** Due to the large number of known computer viruses that have been identified, the virus pattern file is now too large to fit on a single 1.44 MB diskette. The emergency rescue disk creation utility can split the virus pattern file over several diskettes. Additionally, the PCSCAN command line scanner supports virus pattern files that have been spanned over more than one diskette.

What is a Computer Virus?

Simply put, a computer virus is a program that replicates. To do so, it will need to attach itself to other program files (for example, .exe, .com, .dll) and execute whenever the host program executes. Beyond simple replication, a virus almost always seeks to fulfill another purpose: to cause damage.

Called the damage routine, or payload, the destructive portion of a virus can range from overwriting critical information kept on your hard disk's partition table to scrambling the numbers in your spreadsheets to just taunting you with sounds, pictures, or obnoxious effects.

It's worth bearing in mind, however, that even without a "damage routine," viruses allowed to run unabated will continue to propagate—consuming system memory, disk space, slowing network traffic and generally degrading performance. Besides, virus code is often buggy and can also be the source of mysterious system problems that take weeks to understand. So, whether it was written to be harmful or not, a virus on your system can lead to instability and should not be tolerated.

Some viruses, in conjunction with "logic bombs," do not make their presence known for months. Instead of causing damage right away, these viruses do nothing but replicate—until the preordained trigger day or event when they unleash their damage routines across the network.

To learn more about any particular virus, or about viruses in general, you can access Trend Micro's online Virus Encyclopedia that comes with the program or visit Trend Micro's web site at: <http://www.antivirus.com>

Test Virus

The European Institute of Computer Anti-virus Research, along with antivirus vendors, has developed a test file that can be used in checking your installation and configuration.

The file is not an actual virus; it will cause no harm and it will not replicate. Rather, it is a specially created file whose "signature" has been included in the Trend Micro virus pattern file and as such, can be detected by the virus engine.

You can download this file from: <http://www.antivirus.com/vinfo/testfiles/index.htm>!Internet ("http://www.antivirus.com/vinfo/testfiles/index.htm")

Alternatively, copy the following text into a text editor and then save the file with a *.com extension.

```
X5O!P% @AP[4\PZX54(P^)7CC)7}$EICAR-STANDARD-ANTIVIRUS-TEST-FILE!$H+H*
```

You may need to disable real-time scanning before downloading the file. Once on your machine, you can use the test virus to see for yourself how PC-cillin's various scanning features work.

How Viruses Spread

There are many ways for a virus to enter your system:

- Email attachments
- World Wide Web (WWW) sites
- FTP traffic from the Internet (file downloads)
- Shared network files & network traffic in general
- Demonstration software
- Pirated software
- Shrink-wrapped, production programs (rare)
- Computer labs
- Electronic bulletin boards (BBS)
- Diskette swapping (using other people's diskettes for carrying data and programs back and forth)

The most likely virus entry points are email, Internet and network connections, floppy disk drives, and modems or other serial or parallel port connections. In today's increasingly interconnected workplace (Internet, intranet, shared drives, removable drives, and email), virus outbreaks now can spread faster and wider than ever before.

Virus Writers

In the typical scenario, it is an individual, working alone, who writes a virus program and then introduces it onto a single computer, network server, or the Internet. Why? Ego, revenge, sabotage, and basic disgruntlement have all been cited as motivations. Recently, do-it-yourself "virus kits" have been popping up on the Internet, and macro scripts are becoming both easier to learn and more powerful, putting the capacity to engineer viruses in the hands of nearly everyone. In other words, no single, likely profile exists by which virus writers can be described or understood.

So whatever the reason one may have for writing a virus, the important thing is to make certain your company is not victimized, that your data you are responsible for is safe, and that precious time is not wasted hunting down (and cleaning up after) viruses.

Hotkey Utility

Topics Covered:

Hotkey Utility

Buttons

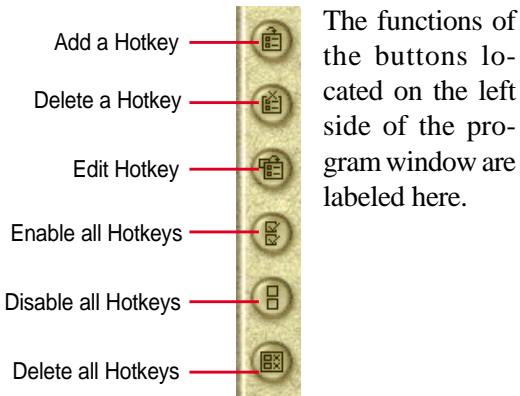
Hotkey Actions

Adding a Program to Run

Screens will vary depending on your operating system but the contents should be the same.

Hotkey Utility

Buttons



Delete a Hotkey

Highlight a Hotkey and click this button to delete it from the current category.



If you did not select a Hotkey, a message will show:



Delete all Hotkeys

Deletes all Hotkeys in the current category. This confirmation will be shown:



Add a Hotkey

You can assign three Hotkeys to the two preset by the utility for a maximum of five. If you don't use the two preset, you can delete them for your own applications.

When you choose to add a hotkey, you can specify a key by pressing that key or key combination in the Hotkey box (the <Fn> key cannot be entered and will be automatically added to the "Notebook Fn Hotkey" category). The available Hotkey actions for assignment are shown in the "Hotkey Action" pull down.



If you already have five hotkey settings, you will get this message.



Edit a Hotkey

Highlight a Hotkey and click this button to change its Hotkey or action.

You can enter any information just like adding a Hotkey.

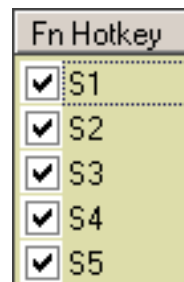


Hotkey Utility (Cont.)



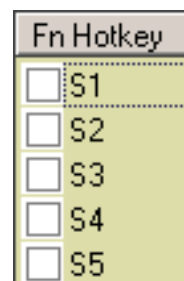
Enable all Hotkeys

Enables all Hotkeys by placing check marks in front of the Hotkeys in the current category.

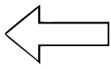
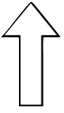
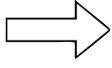


Disable all Hotkeys

Disables all Hotkeys by removing check marks from the front of the Hotkeys in the current category.



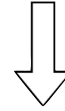
Hotkey Actions

Actions	Descriptions	Examples (of action)
None:	Performs no action	--
Move Window To Left:	Moves the active window left between 1-50 steps	
Move Window To Up:	Moves the active window up between 1-50 steps	
Move Window To Right:	Moves the active window right between 1-50 steps	

Actions**Descriptions****Examples** (of action)

Move Window To Below:

Moves the active window down between 1-50 steps



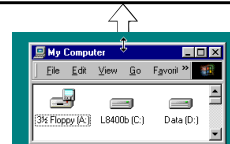
Extend Window From Left:

Stretches the active window left between 1-50 steps



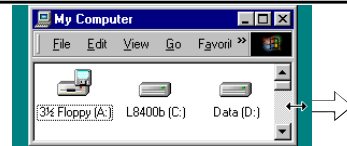
Extend Window From Up:

Stretches the active window up between 1-50 steps



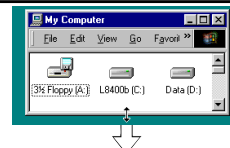
Extend Window From Right:

Stretches the active window right between 1-50 steps



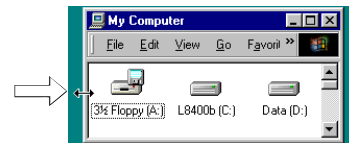
Extend Window From Below:

Stretches the active window down between 1-50 steps



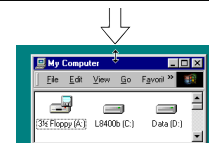
Shrink Window from Left:

Shrinks the active window from the left between 1-50 steps



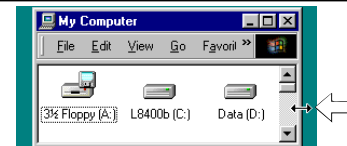
Shrink Window from Up:

Shrinks the active window from the top between 1-50 steps



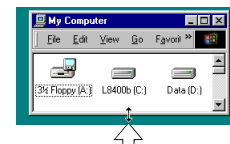
Shrink Window From Right:

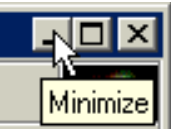
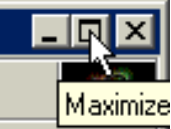
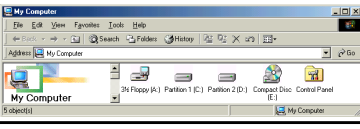
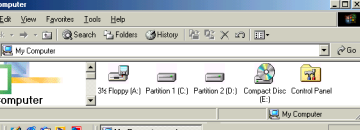
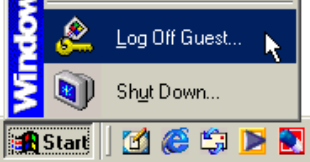
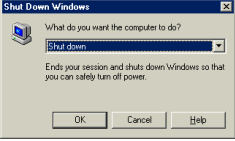
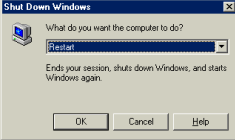
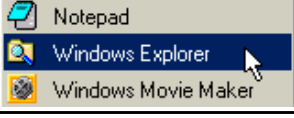


Shrinks the active window from the right between 1-50 steps



Shrink Window From Below:

Shrinks the active window from the bottom between 1-50 steps




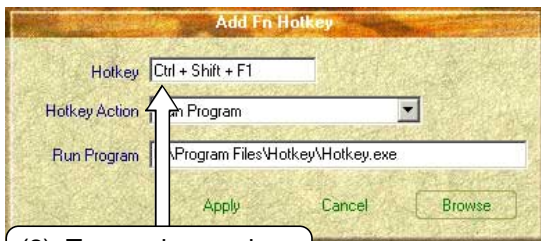
Actions	Descriptions	Examples (of action)
Minimize Window:	Minimizes the active window	
Maximize Window:	Maximizes the active window	
Show Normal Size:	Shows the active window in normal size (user adjustable)	
Restore:	Restores a minimized window to its previous size.	
Log Off:	Logs the current user OFF from the current Windows session and any connected networks.	
Shut Down:	Exits from Windows and turns OFF the Notebook PC.	
Reboot:	Restarts the Notebook PC	
Run Explorer:	Runs Windows Explorer	
Run Browser:	Runs the Internet Browser	
Run Program:	Runs a user defined program	

Hotkey Utility (Cont.)

Adding a Program to Run

To add a Hotkey to run a program follow the steps below.

Add a Hotkey  (1) Click **Add a Hotkey** button.

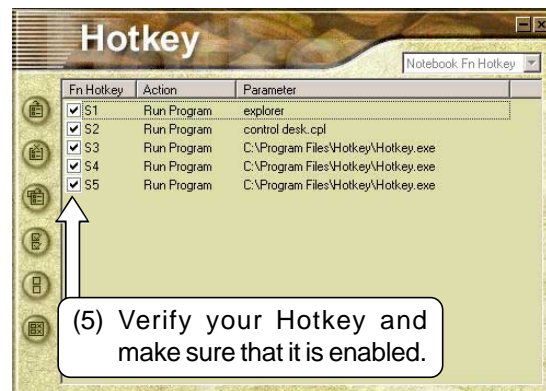
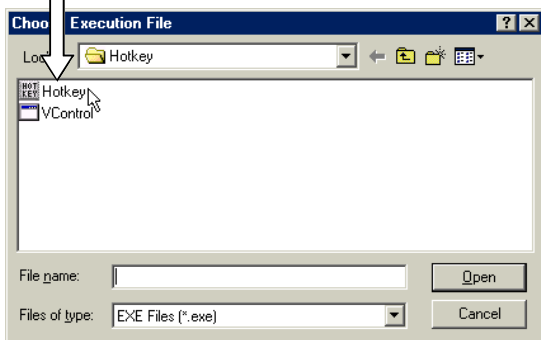


(2) Type a key or key combination here.

(3) Choose **Run Program** in this pull down menu.



(4) Choose an executable file using explorer.



(5) Verify your Hotkey and make sure that it is enabled.

Windows Flash Utility (WINFLASH)

Topics Covered:

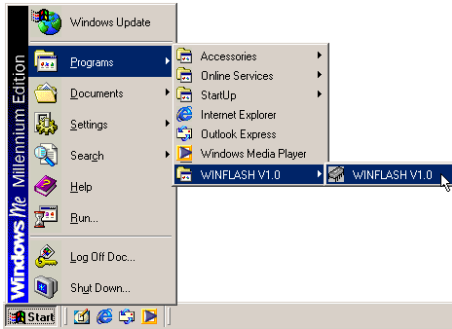
Updating Your BIOS

Resetting Your BIOS

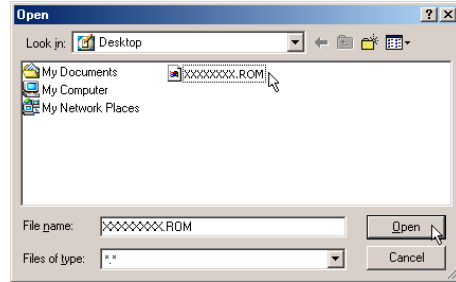
Screens will vary depending on your operating system but the contents should be the same.

Updating Your BIOS

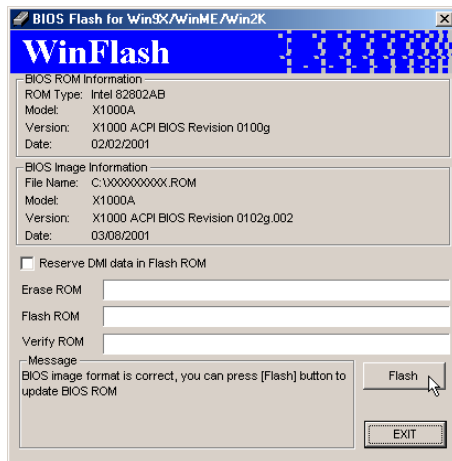
If you ever hear “resetting your BIOS”, it entails pressing [F2] on bootup to enter BIOS setup and then selecting **Load Setup Defaults** on the “Exit” menu.



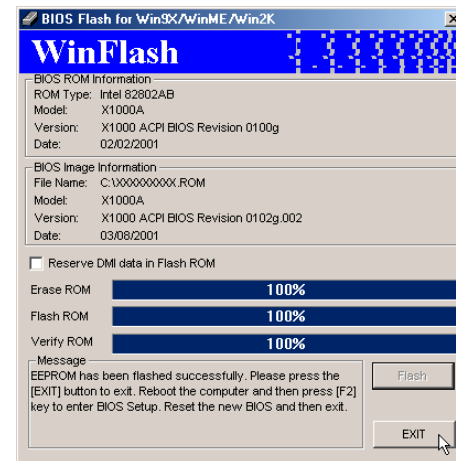
To run **WINFLASH**, access the program shortcut through the **Start** button.



When you enter **WINFLASH**, you will be immediately asked for the BIOS image file. Browse to the file and click **Open**.



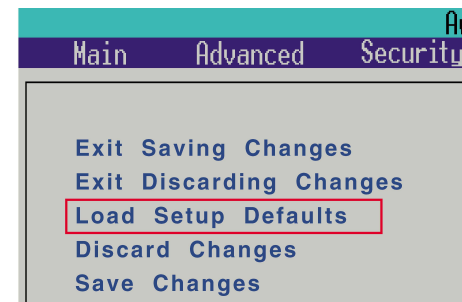
Compare the BIOS ROM (your current BIOS) to the BIOS image (the new BIOS). If this is correct, click **Flash** to write the new BIOS to your Notebook PC. If necessary select “Reserve DMI data in Flash ROM” if there are information added to the DMI. If you don’t know, leave it unselected.



Click **Exit** when done. You need to restart your Notebook PC and “reset your BIOS”. See instructions below.

Resetting Your BIOS

If you ever hear “reset your BIOS”, it entails pressing [F2] on bootup to enter BIOS setup and selecting **Load Setup Defaults**, and then **Exit Saving Changes** on the “Exit” menu.



ASUS PC Probe

Topics Covered:

Starting ASUS PC Probe

Using PC Probe Monitoring

ASUS PC Probe Task Bar Icon

Screens will vary depending on your operating system but the contents should be the same.

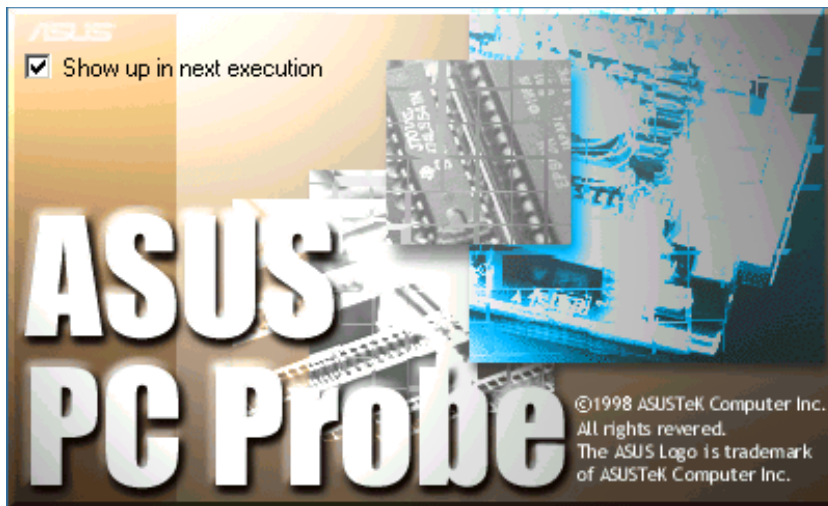
Welcome to ASUS PC Probe


ASUS PC Probe is a convenient utility to continuously monitor your computer system's vital components, such as fan rotations, voltages, and temperatures. It also has a utility that lets you review useful information about your computer, such as hard disk space, memory usage, and CPU type, CPU speed, and internal/external frequencies through the DMI Explorer.

Starting ASUS PC Probe

If the ASUS Probe icon (magnifying glass) is not shown on the taskbar (see below), click the Windows **Start** button, point to **Programs**, and then **ASUS Utility**, and then click **Probe VX.XX**.

When ASUS PC Probe starts, a splash screen appears allowing you to select whether to show the screen again when you open PC Probe or not. To bypass this startup screen, clear the **Show up in next execution** check box.



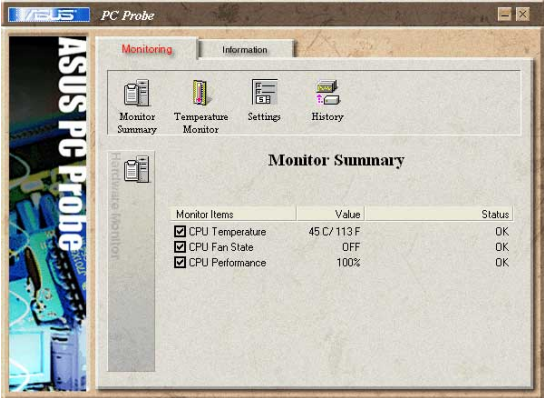
The PC Probe icon  will appear on the taskbar's system tray indicating that ASUS PC Probe is running. Clicking the icon once will allow open the PC Probe interface.

Windows XP Taskbar

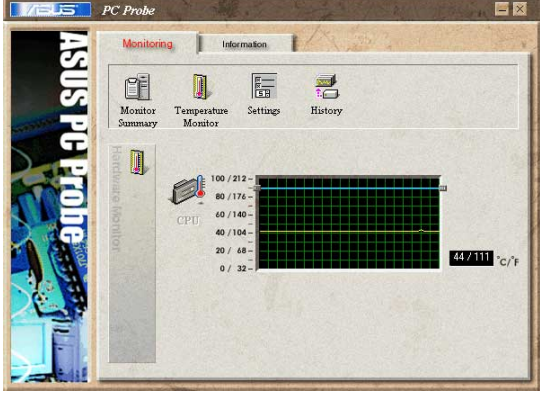
Windows XP will hide taskbar items. Click the arrow to show running services.



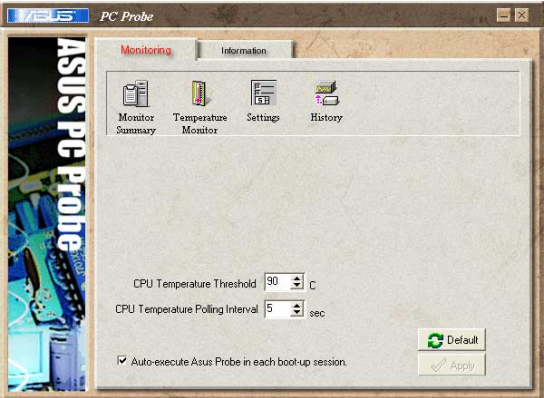
Using ASUS PC Probe Monitoring



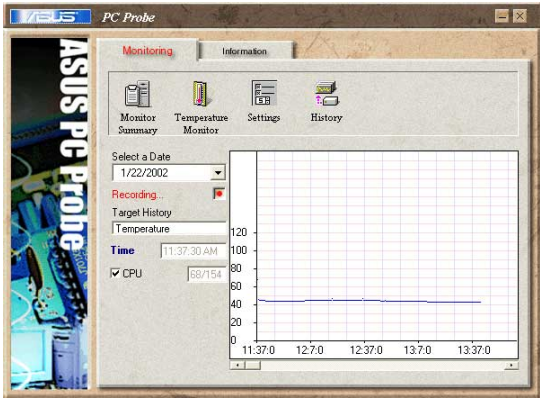
Monitor Summary
Shows a summary of the items being monitored.



Temperature Monitor
Shows the PC's temperature.

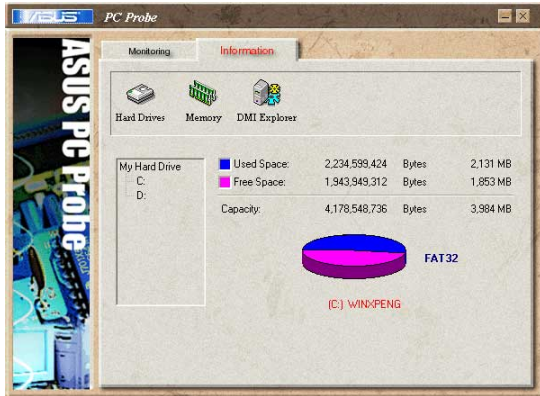


Settings
Lets you set threshold levels and polling intervals or refresh times of the PC's temperature, fan rotation, and voltages.



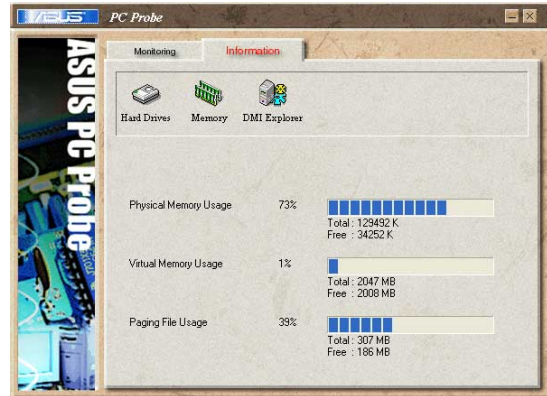
History
Lets you record the temperature monitoring activity by date, time, and target history. Click the record button and select a date. To view a previous recording, simply choose that date.

Information



Hard Drives

Shows the used and free space of the PC's hard disk drives and the file allocation table or file system used. Information on other hard drives can be accessed by clicking on the relevant drive letter.



Memory

Shows the PC's memory load, memory usage, and paging file usage.



DMI Explorer

Shows information pertinent to the PC, such as CPU type, CPU speed, and internal/external frequencies, and memory size.

ASUS PC Probe Taskbar Icon

Right clicking the PC Probe icon will bring up a menu to open or exit ASUS PC Probe and pause or resume all system monitoring.



When the ASUS PC Probe senses a problem with your PC, portions of the ASUS PC Probe icon changes to red and audio alerts will be heard from the speaker.

NOTE: PC Probe will constantly use resources to check the system status while Windows is operating. It is suggested to exit PC Probe while using high demanding applications.

Check Mail Utility

Topics Covered:

Check Mail Quick Setup

Check Mail Startup

Screens will vary depending on your operating system but the contents should be the same.

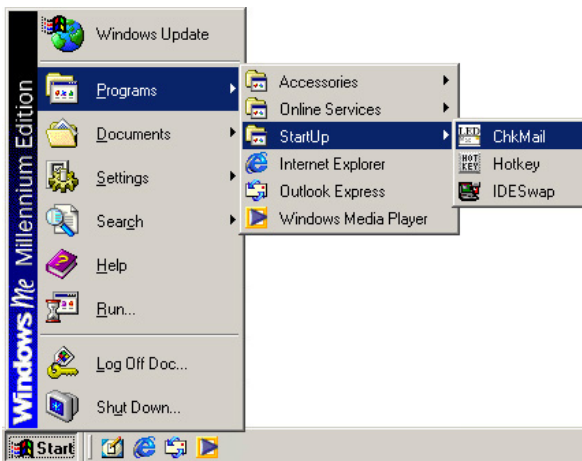
Check Mail Quick Setup

The support CD provided with this Notebook PC allows you to install Check Mail Utility to monitor and notify you of incoming email messages waiting in your Microsoft® Outlook or Outlook Express Inbox. The Check Mail utility was designed for Microsoft Outlook products and may or may not be compatible with other email applications. Launch Microsoft Outlook Express and setup your email account if not done so already. A blue light between the two email (✉) icons will blink when there are unread email in your Inbox. Unread email will be indicated in Outlook by a bold “Inbox (x)” (the x being the number of unread emails).

Check Mail Startup

After installation, “Check Mail” loads with Windows and runs in the background. To view Windows startup items, browse to **Start | Programs | StartUp** or type **msconfig** in Start | Run.

Using Windows Start Menu



Using MS Configuration



If you scroll down, you will see “Startup” items. “Hotkey Utility” and “Check Mail Utility” are set to startup with Windows. You can deselect the items you do not want to startup with Windows.

